



NON-EXHAUSTIVE LIST OF EEE FALLING WITHIN THE SIX CATEGORIES OF EEE COVERED BY THE WASTE MANAGEMENT (ELECTRICAL AND ELECTRONIC EQUIPMENT) REGULATIONS, S.L. 549.89

Category 1. Temperature exchange equipment

Refrigerators	Combined refrigerators-freezers	Chest freezers
Upright freezers	Air-conditioners	Heat pumps
Refrigerated show-cases and counters	Refrigerated furniture	Vending machines incorporating heating or refrigerating devices

Category 2. Screens, monitors, and equipment containing screens having a surface greater than 100 cm²

Laptops	Notebooks	Tablets
Cathode-ray tube monitors	LED monitors	LCD monitors
Cathode-ray tube televisions	LCD televisions	LED televisions
Plasma televisions	LCD photo frames	Indicator panels

Category 3. Lamps

Discharge lamps	Fluorescent lamps	Hot-cathode lamps
Arc lamps	Ultraviolet lamps	Infra-red lamps
Mercury/sodium vapour lamps	Metal halide lamps	LED lamps

Category 4. Large equipment with external dimensions more than 50 cm

Central heating boilers	Photovoltaic panels	Inverters
Dry-cleaning	Iron machines and presses	Dish washing machines
Electric ovens	Electric cookers	Large furnaces
Washing machines	Drying machines	Hoods
Heating radiators	Liquid filled radiators	Convection heaters
Space-heating apparatus	Soil-heating apparatus	Printing machines
Photocopiers	Scanners	Cash registers
Electricity meters	Jukeboxes	Electric cycles
Treadmills	Electronic rangefinders	Electronic theodolites and tachymeters
Instruments for inspecting semiconductor wafers and photomasks	Meteorological, hydrological and geophysical instruments	Instruments used for geodesy, topography, hydrography, oceanography
Machines used for testing the hardness/mechanical properties of metal	Machines used for testing textiles, paper and cardboard	Vending machines without heating or refrigeration devices
Oscilloscopes and oscillographs	Photogrammetrical surveying instruments	Coin-sorting/counting/wrapping machines

Cables		
--------	--	--

Category 5. Small equipment with external dimensions less than 50 cm

Microwave ovens	Electric blankets	Fans
Scales	Sewing machines	Iron machines
Watches	Clocks	Food grinders
Food mixers	Fruit/vegetable extractors	Electric hobs
Cooking plates	Boiling rings	Electric grillers
Electric roasters	Electric cookers	Electric toasters
Electric deep fat fryers	Ventilation equipment	Electric instantaneous water heaters
Electric water heaters	Immersion heaters	Electric kettles
Vacuum cleaners	Shavers	Hair clippers
Hairdryers	Hand-drying apparatus	Vibratory-massage apparatus
Microphones	Ear/headphones	Radio cassette players

Radio-broadcast receivers	Alarm-clock radios	Sound recording or sound reproducing equipment
Mp3 players	e-readers	Car-navigators
Hi-fi equipment	Amplifiers	Turntables
CD players	Tape cassette recorders	Digital musical instruments
Video recording or reproducing equipment	Transmission apparatus for radio broadcasting or television	Television cameras
DVD/blue ray players	Set-top boxes	Video cameras
Projectors	Reception apparatus for television	Projection screens
Speakers	Digital cameras	Photographic flashlight or flashlight apparatus
Cinematographic apparatus	Portable electrical lamps	Electric lighting or visual signalling equipment of a kind used for bicycles
Electric lighting sets (e.g. Christmas lights)	Ceiling/wall lighting fittings	Chandeliers and other ceiling/wall lighting fittings
Desk lamps	Bedside lamps	Floor-standing lamps
Searchlights	Spotlights	Drills
Chainsaws	Circular saws	Grinders

NON-EXHAUSTIVE LIST OF ELECTRICAL AND ELECTRONIC EQUIPMENT (EEE) – VERSION 2

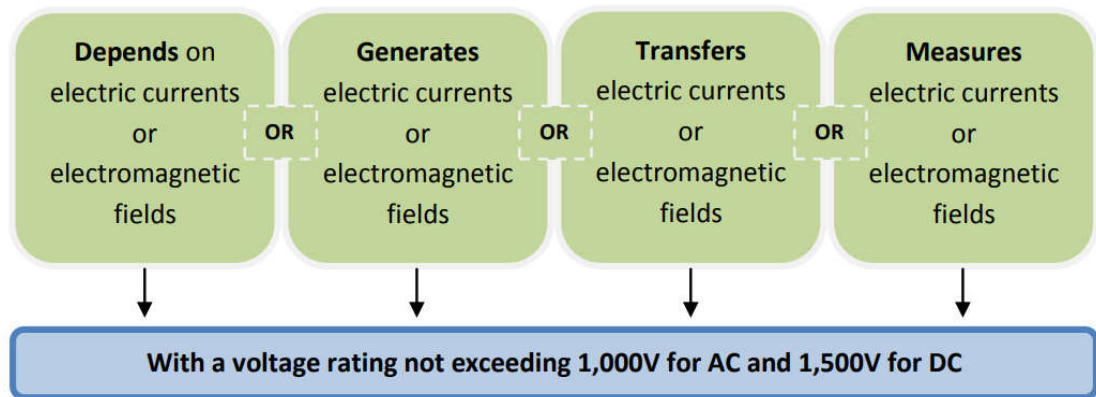
Belt sanders	Hedge trimmers	Planers
Lawn edge cutters	Brazing/soldering machines	Welding machines
Electric motors lawn mowers	Electrical toys (e.g. electric trains, electric car racing sets)	Toys and models incorporating a motor
Toy musical instruments	Hearing aids	Electro-cardiographs
Ultrasonic scanning apparatus	Magnetic resonance imaging apparatus	Scintigraphy apparatus
Electro-diagnostic monitoring apparatus	Dental drill engines	Burglar alarms
Fire alarms	Smoke alarms	Electric sound/visual apparatus
Electric fence energisers	Electronic thermometers and pyrometers	Hydrometers
Areometers	Psychrometers	Electronic flow meters
Instruments for measuring pressure of liquids or gases	Instruments for measuring variables of liquids or gases	Gas or smoke analysis apparatus
pH meters	Instruments for measuring electrical quantities	Instruments for measuring geometrical quantities
Electronic thermostats	Computers for cycling, running, diving, etc.	Small equipment with integrated photovoltaic panels
Cables		

6. IT & telecommunication equipment with any external dimensions less than 50 cm

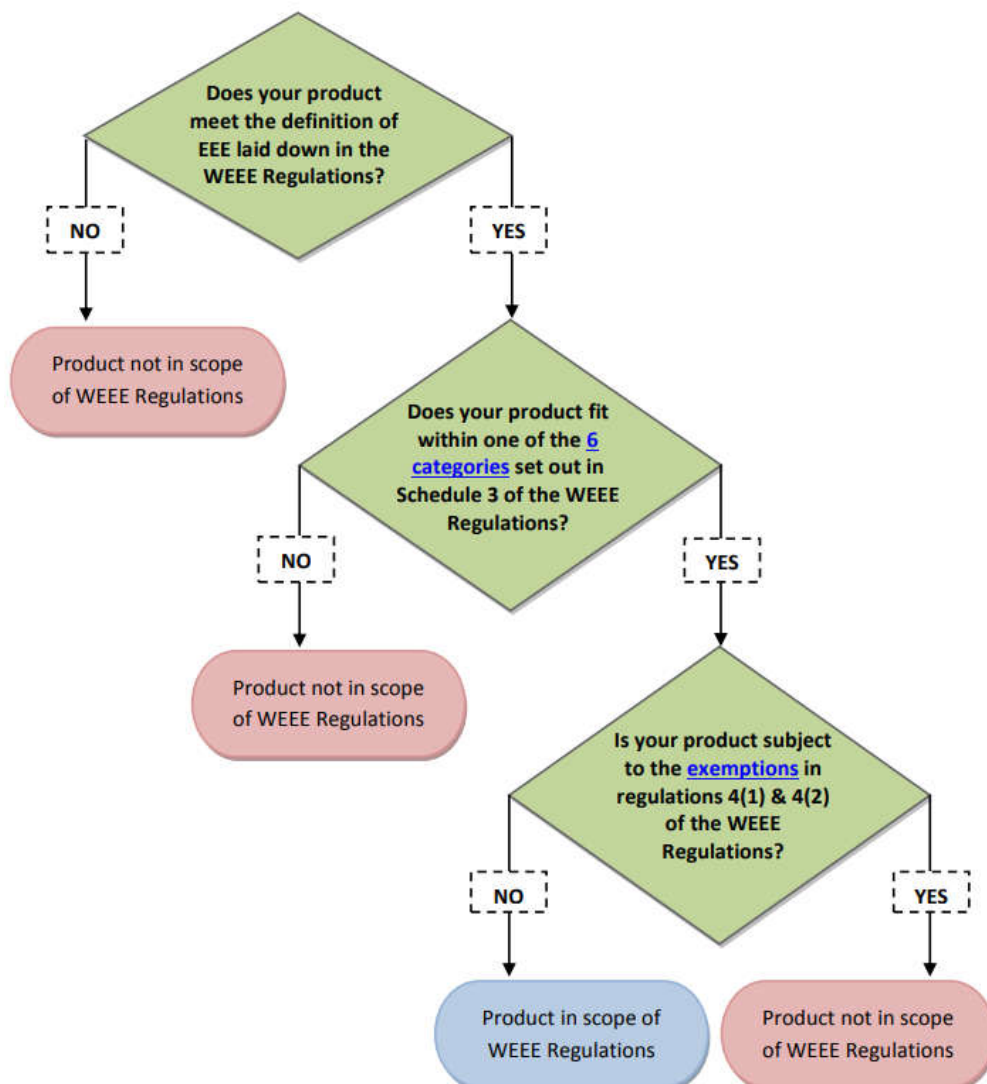
Calculators	CD-ROM drives	Hard disks
Storage units	Magnetic/optical readers	Data processing machines
Processing units for automatic data-processing machines	Electric typewriters	Machines with digital copying as principal function
Electronic calculating machines	Telephone sets	Cordless phones
Videophones	Portable receivers for calling, alerting or paging	Instruments for measuring electrical quantities for telecommunications
Answering machines	Mobile phones	Smartphones
Pagers	Video game consoles	Video game controllers
Modems	GPS	Mouse
Keyboards	USB hubs	Routers
Cables		

Additional notes:

- EEE is any product that:



- To Determine whether a product falls within the scope of the WEEE Regulations, the following flow chart may be used as a guidance:



- This list is considered to be a *'living document'* and the Environment and Resources Authority (ERA) may update it as necessary in light of experience with the implementation of the Regulations.
- The list provided in this document is for guidance only. It provides an **indicative and non-exhaustive list** of electrical and electronic equipment (EEE), per category, that fall within the scope of the Regulations. For further information, it is advised to contact the competent authority on: weee@era.org.mt
- Certain equipment can be classified under either Category 4 or Category 5, depending on the external dimensions of the equipment. If one of the external dimensions of the equipment is 50 cm or less, then the equipment should be classified under Category 5. If any external dimensions of the equipment are more than 50 cm, then the equipment should be classified under Category 4.
- IT and telecommunication equipment can be classified under either Category 6 or Category 4, depending on the external dimensions of the equipment. If any external dimensions of the equipment are 50 cm or less, it should be classified under Category 6. If an external dimension of the equipment is more than 50 cm, then the equipment should be classified under Category 4.
- Cables that are components of an equipment, either permanently attached or removable, but sold together, marketed and shipped for use with the equipment do not fall within the scope of the Waste Management (Electrical and Electronic Equipment) Regulations, S.L. 549.89. However, cables placed on the market individually, and are not part of another equipment are considered to fall within the scope of the said Regulations and can be classified under either Category 4, 5 or 6.
- Cables that are specifically designed to work with IT and telecommunications equipment can be classified under either Category 6 or 4; depending on the external dimensions of the cable. Cables other than those used with IT and telecommunications equipment can be classified under either Category 4 or Category 5, depending on the external dimensions of the equipment. The dimension of the cable can be determined by sketching a box around the best compact form to pack the cables and measure the longest side of the sketch.
- Components that are placed on the market separately in order to be used to manufacture and/or repair EEE, fall outside the scope of the WEEE Regulations, unless they have an independent function themselves. However, a self-assembly kit that consists of components that form an EEE when assembled, is considered EEE at the stage when it is sold as an assembly kit.
- An equipment that does not require electricity to fulfil its basic function is excluded from the scope of the WEEE Regulations. However, equipment that depends on electric currents in order to function properly (for example, an electric toothbrush) are not excluded from the scope of the WEEE Regulations.