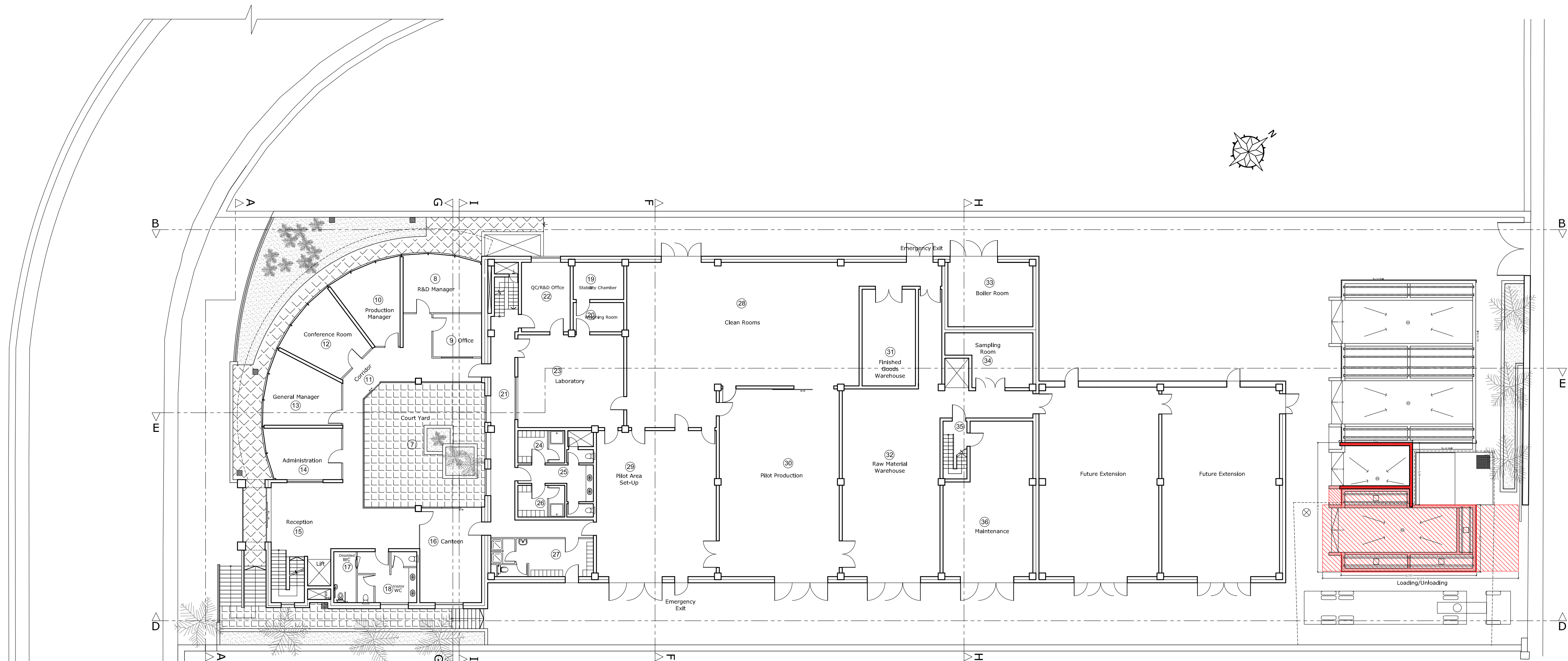


Ground Floor Plan as approved  
scale 1:200



Ground Floor Plan as proposed  
scale 1:200

1 0 1 2 3 4 5 6 7 8 9 10 m  
Scale 1:200

Rev.	Description	Date
-	-	-
-	-	-
-	-	-
<div><div></div><div>Wallace Farrugia &amp; Associates</div><div>Architects, Civil Engineers &amp; Structural Consultants.</div><div>No 44, Appt 3, St.Francis Street, Sliema SLM2069 tel:21316758 fax: 21316760</div></div>		
Commission:		
Extension to External Flammable Warehouse at Sterling Factory		
Client:		
Sterling Chemicals Ltd		
Drawing Title:		
Ground Floor Plan as approved by PA 4236/08 (Minor Amendment) & Proposed Ground Floor Plan		
Scale:		Drawing No:
1:200		170-14-031
Job Ref:		
170/14		
Drawn:	Amended:	Approved:
t.d.	-	-
Checked:	Date:	
W.F.	04-03-2015	
Copyright © 2012 WALLACE FARRUGIA & ASSOCIATES		