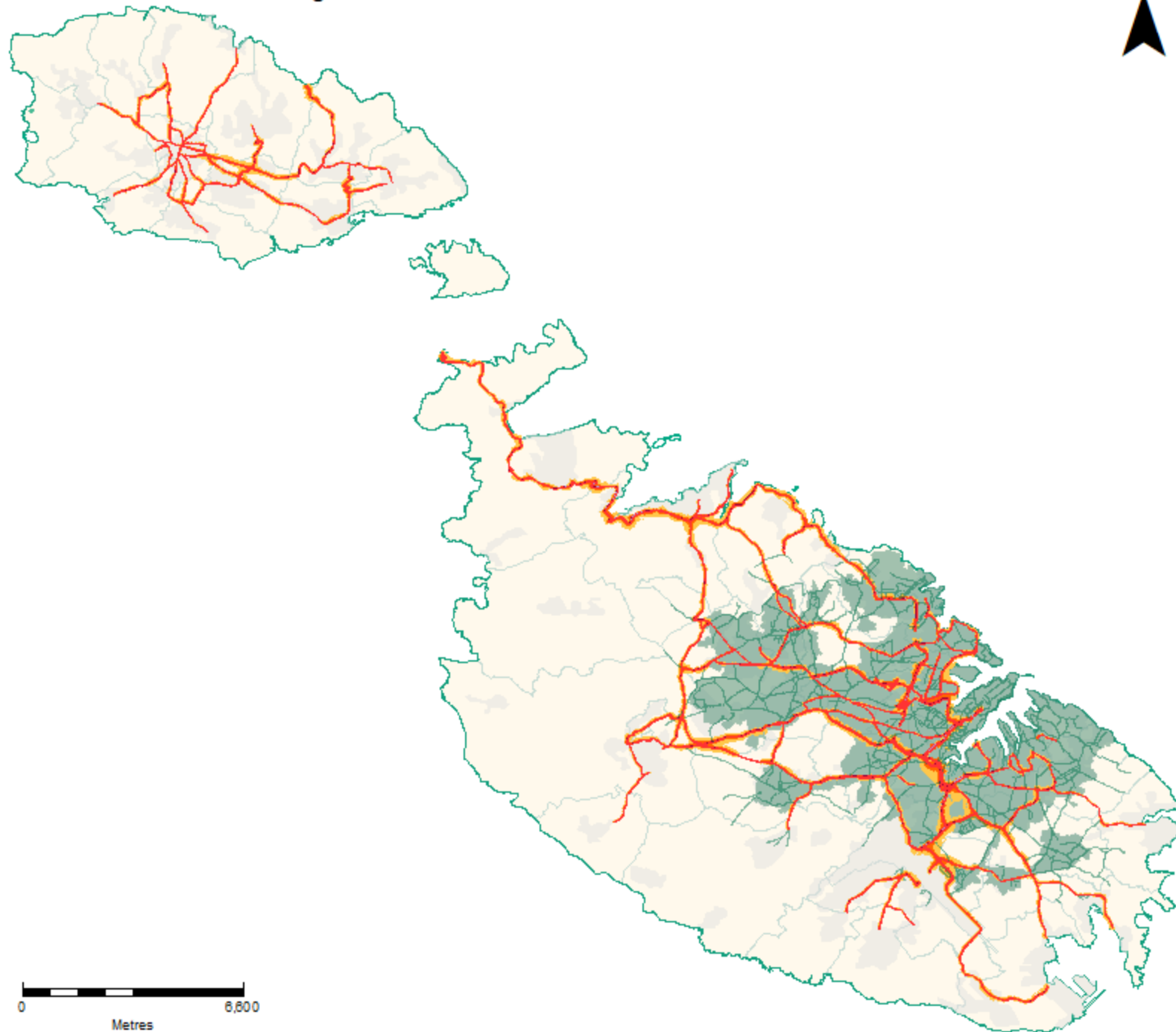


R3 Major Roads L_{night}



Environment & Resources Authority
Hexagon House, Spencer Hill, Marsa, MRS 1441, Malta
T | +358 2292 3500 W | era.org.mt

Malta R3 strategic noise mapping results for assessment year 2016

Legend

Noise contour bands (dB)

50 - 54

55 - 59

60 - 64

65 - 69

> 70

Arterial, Distributor & Local Access Roads

Malta Noise Agglomeration

Local Councils' Boundaries

Bounding Co-ordinates of Map (UTM / Metres):

Min E 426,060; N 3,995,767

Max E 462,062; N 3,962,446

Date: 28/02/2019

Copyright: Environment & Resource Authority
Base Maps: Mapping Unit, Planning Authority