

Environment & Resources Authority
Hexagon House, Spencer Hill, Marsa, MRS 1441, Malta
T | +356 2292 3500 W | era.org.mt

Benzene concentrations

Legend

Benzene concentrations 2016

$\mu\text{g}/\text{m}^3$


 < 1.7

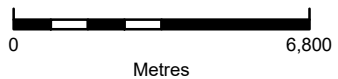
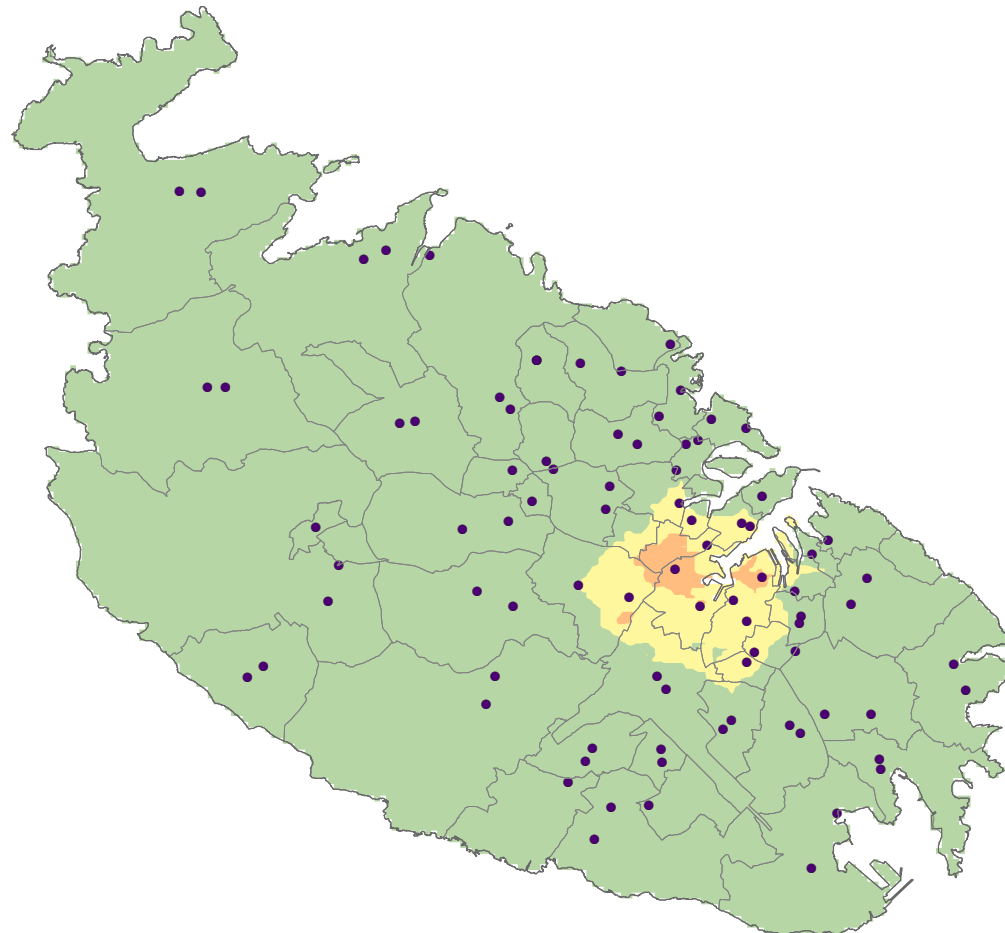
 1.7 - 2

 2 - 3.5

 3.5 - 5

 > 5

 Passive diffusion tube network 2016



Bounding Co-ordinates of Map (UTM / Metres):

Min E 425,663; N 3,994,865
Max E 463,111; N 3,959,910

Date: July 2020

Copyright: Environment & Resources Authority
Base Maps: Mapping Unit, Planning Authority