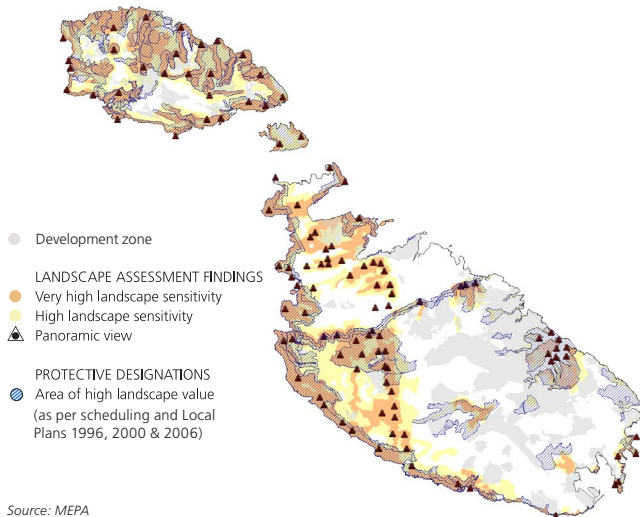


LS1 AREAS PROTECTED FOR LANDSCAPE VALUE

☺ Key policy question: How much of Malta's landscape is legally protected?



Source: MEPA

The Maltese landscape has an attractive and distinctive character and it is important to maintain it through positive protective measures. To this end, Areas of High Landscape Value (AHLV) have been designated under the provisions of the Development Planning Act in 1996, 2000 and 2006, and through the local planning process. During 2006, 5 local plans were approved, and together with the designation of Ghajn Barrani in Gozo, brought on board 42km² of new AHLVs. The proportion of legally protected landscapes in the Maltese Islands is now 33% of total land area, almost 3 times more than in 2000. The newly protected areas reflect the findings of the Landscape Assessment Study,²⁵ which had identified that over 51% of the Maltese Islands had high or very high landscape sensitivity.

²⁵ See Public Consultation Draft published in September 2004 (MEPA 2004).