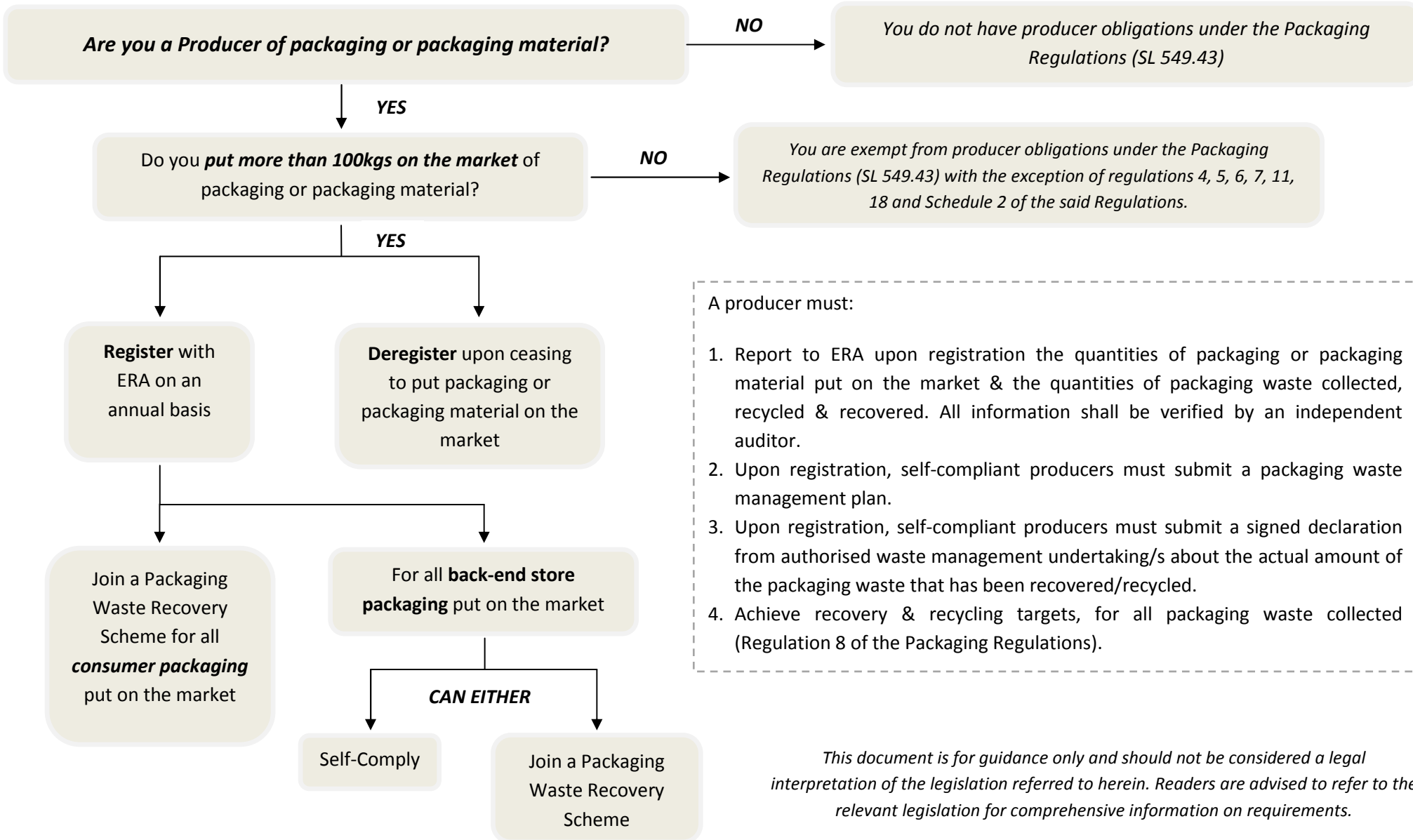




Quick Guide for Producers of Packaging or Packaging Material

SL. 549.43 – the Waste Management (Packaging & Packaging Waste) Regulations

For further assistance please contact us on:
Phone: 2292 3500 or
Email: packaging@era.org.mt



- A producer must:
1. Report to ERA upon registration the quantities of packaging or packaging material put on the market & the quantities of packaging waste collected, recycled & recovered. All information shall be verified by an independent auditor.
 2. Upon registration, self-compliant producers must submit a packaging waste management plan.
 3. Upon registration, self-compliant producers must submit a signed declaration from authorised waste management undertaking/s about the actual amount of the packaging waste that has been recovered/recycled.
 4. Achieve recovery & recycling targets, for all packaging waste collected (Regulation 8 of the Packaging Regulations).

This document is for guidance only and should not be considered a legal interpretation of the legislation referred to herein. Readers are advised to refer to the relevant legislation for comprehensive information on requirements.