



Environment & Resources Authority  
Hexagon House, Spencer Hill, Marsa, MRS 1441, Malta  
T | +356 2292 3500 W | era.org.mt

## Nitrogen dioxide concentrations

### Legend

#### Nitrogen dioxide concentrations 2014

$\mu\text{g}/\text{m}^3$

< 20

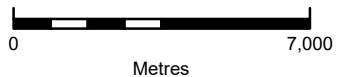
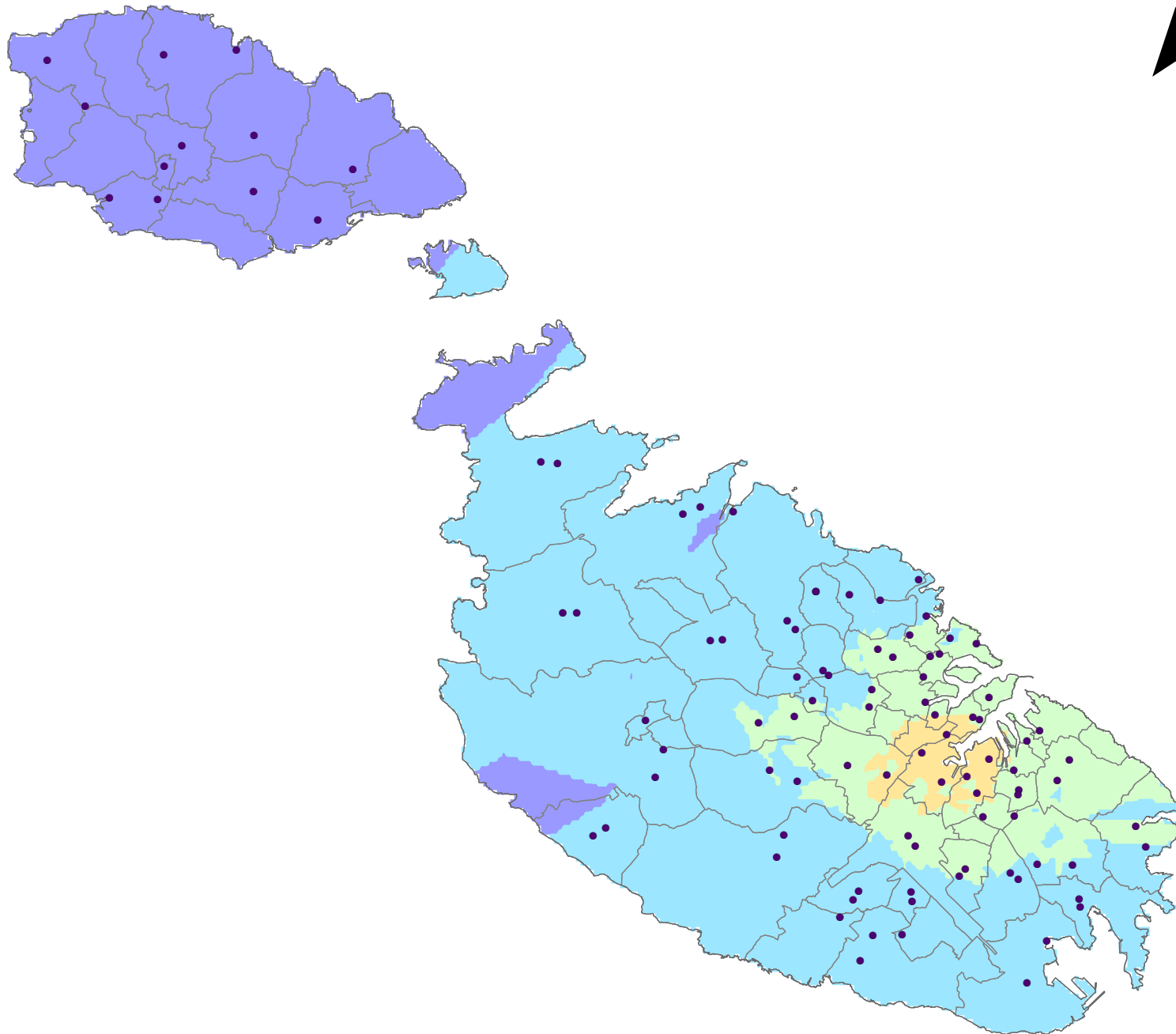
20 - 30

30 - 40

40 - 50

> 50

Passive diffusion tube network in 2014



Bounding Co-ordinates of Map (UTM / Metres):

Min E 424,925; N 3,995,369  
Max E 463,054; N 3,960,082

Date: July 2020

Copyright: Environment & Resources Authority  
Base Maps: Mapping Unit, Planning Authority