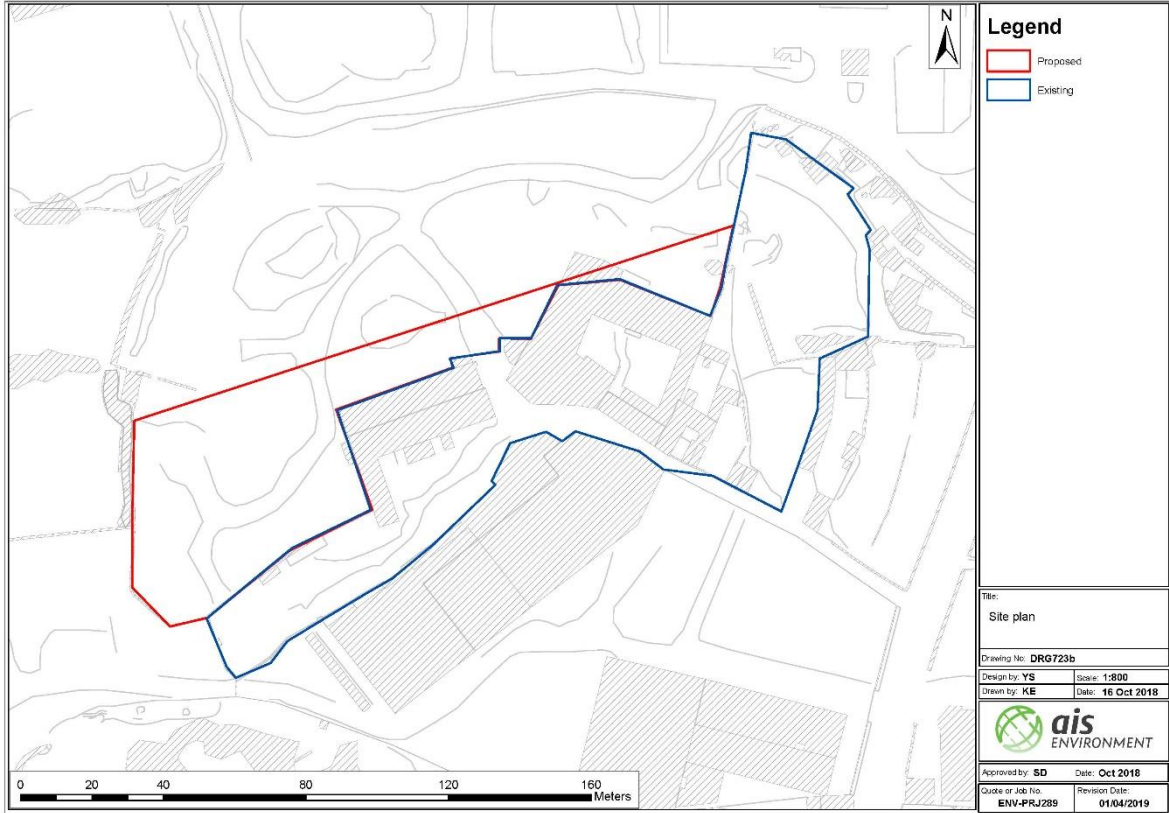


Variation to IPPC Permit Application for Metalco Ltd.

IP 0002/13/B



Location



Existing Permitted Activities



Storage and processing of various waste streams of both hazardous and non-hazardous materials

Counterfeit tobacco; textiles; paper and cardboard; waste tyres; wood; WEEE; ferrous & non-ferrous metals; mattresses; batteries; liquids; and printing toners

Processing is limited to mechanical treatment of waste such as shredding, cutting and baling

Proposed Variations to Activities



Extending the site towards the northwest of the site for car parking

Backfilling of quarry included in the original application

New ZATO shredder and generator

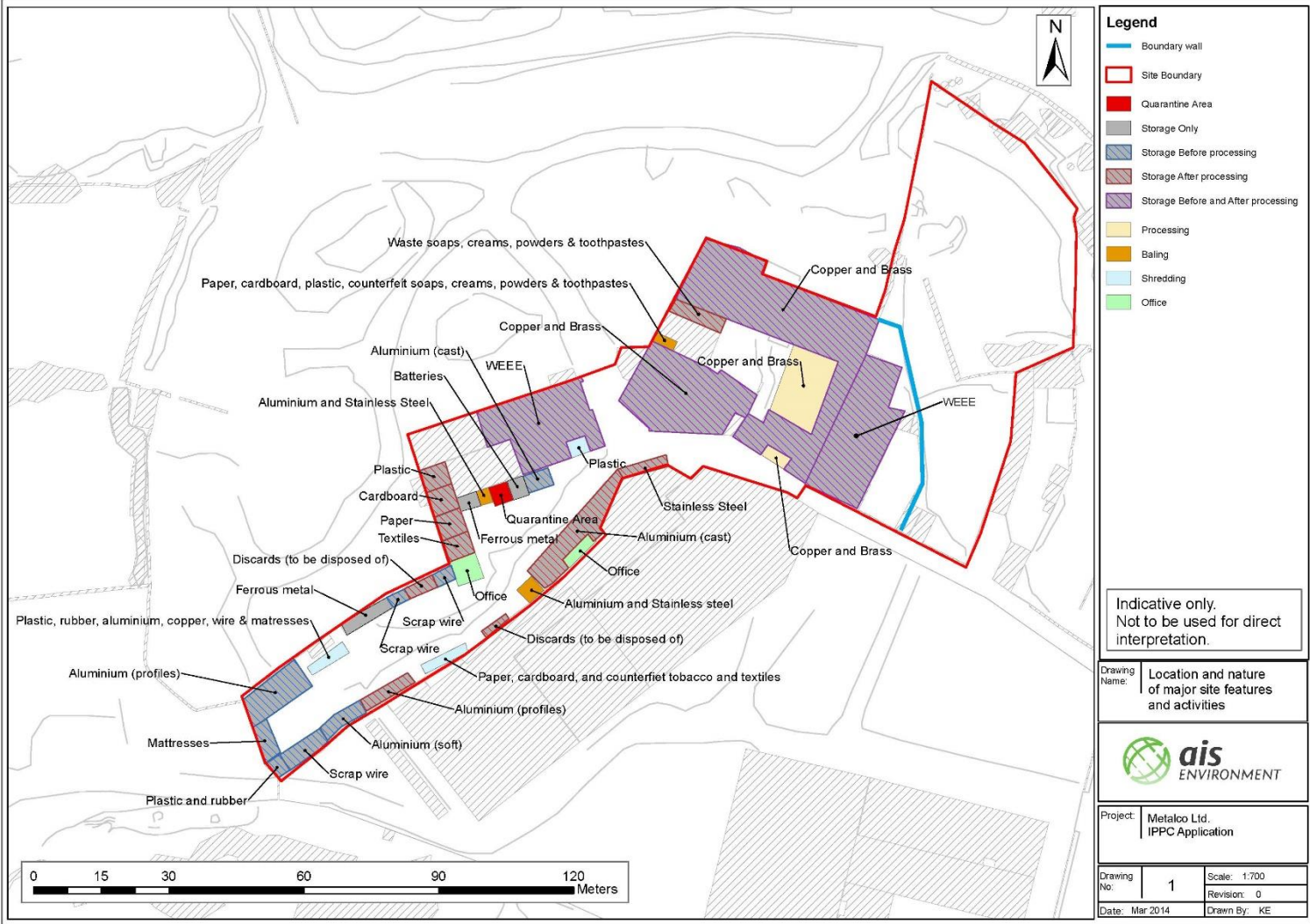
Permanent office building in accordance with PA 03146/13

Shifting of scrap material storage, baler, shredder and conveyor

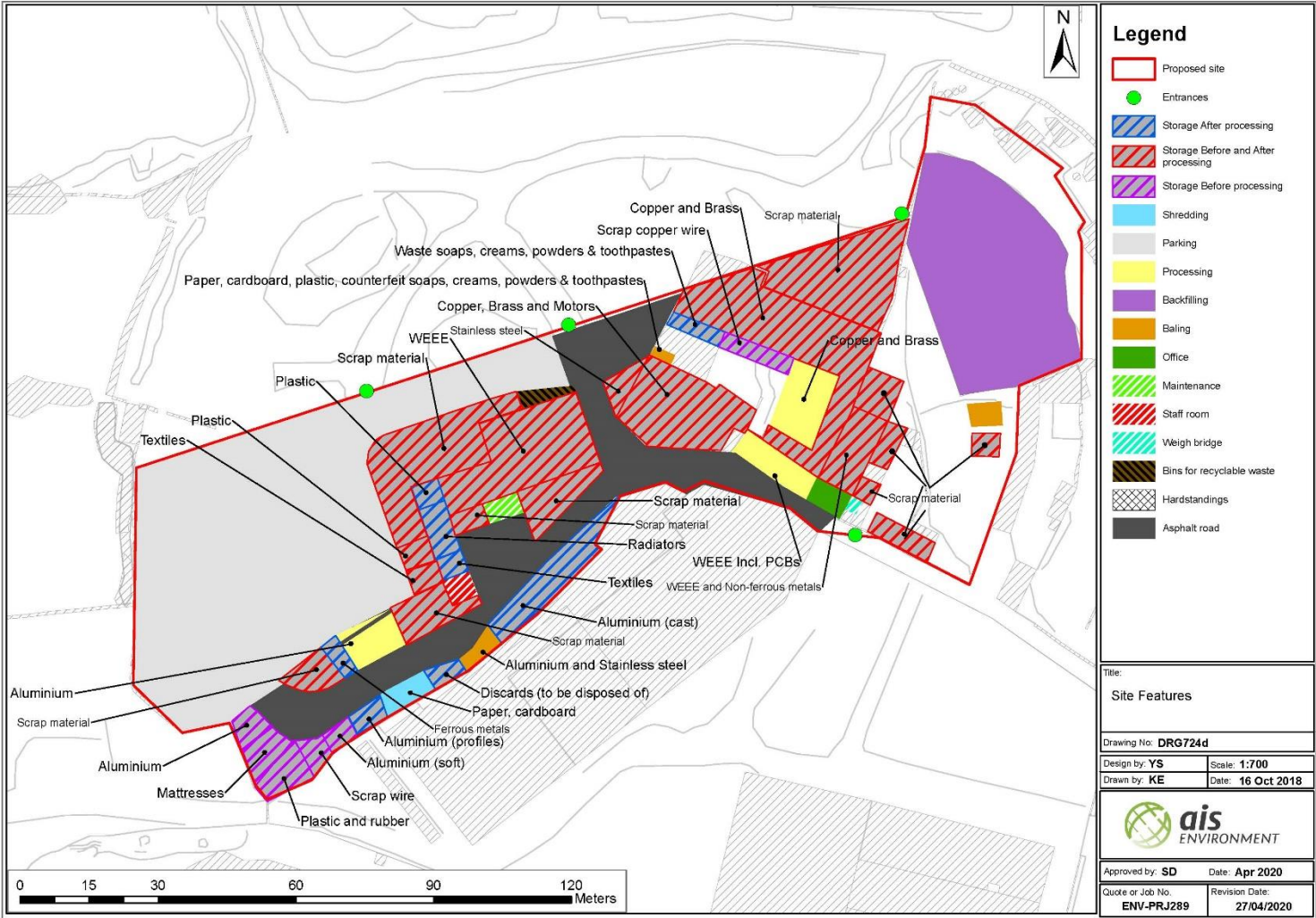
Increase in storage and processing volumes of waste materials

Update to waste carriers/broker codes

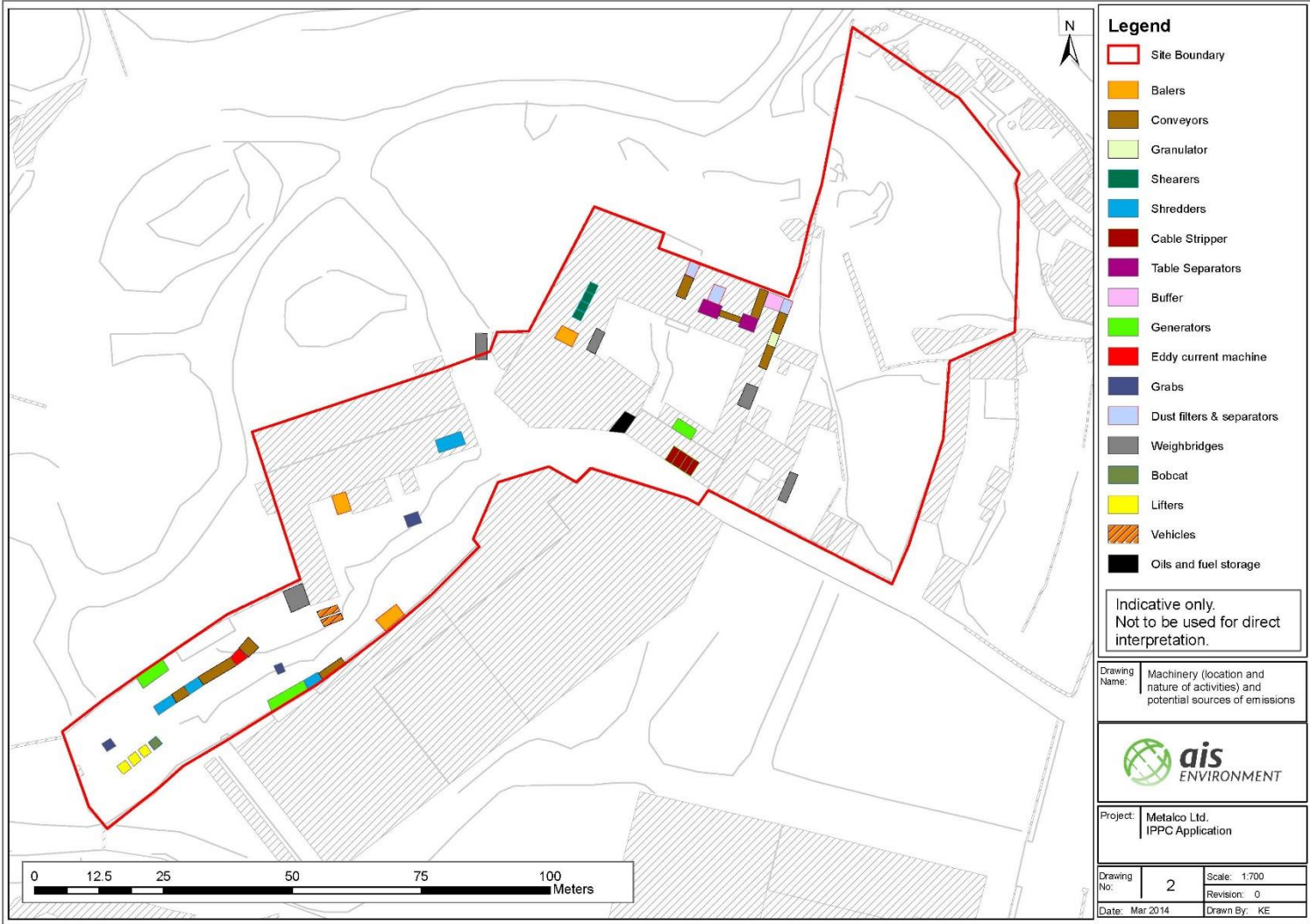
Permitted activities map



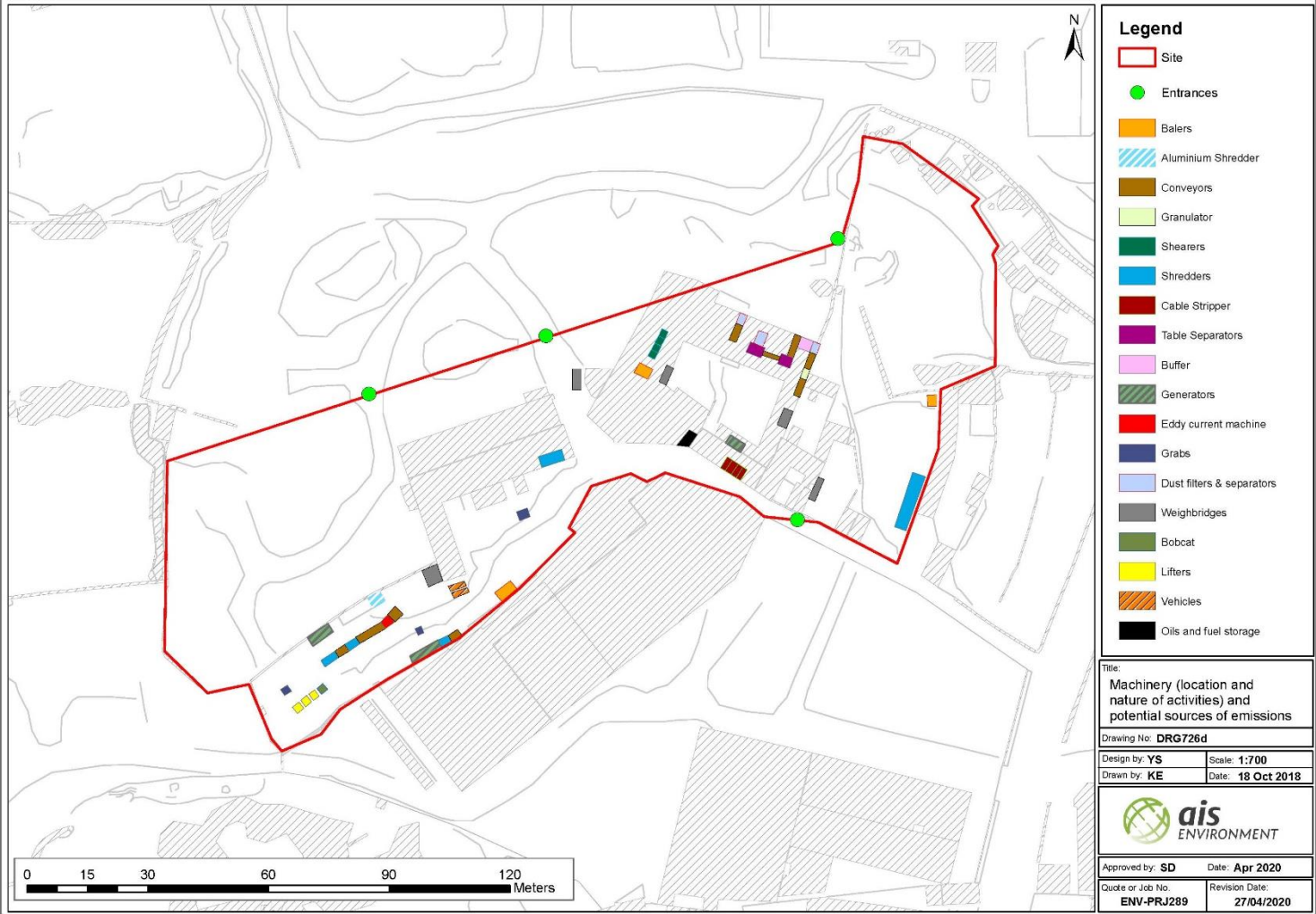
Proposed activities map



Permitted machinery map



Proposed machinery map



Waste quantities



Waste	Max site qty (tonnes)	Annual qty (tonnes)
Cigarettes and tobacco	20	No change
Clothes, textiles and waste from processed textile fibres	30	No change
Paper and cardboard	25	3000
WEEE	300	1000
Ferrous metals	2000-3000	3000-4000
Non-ferrous metals	800	1350

Emissions



Land & groundwater: No changes to existing permit

Rainwater: No changes to rainwater handling system

Air quality: Some additional emissions from machinery to be mitigated by maintenance of machinery and filters

Noise: Some additional noise from machinery and backfilling; no change to mitigation measures necessary

Monitoring: Monitoring of channelled emissions of PCBs, dust, metals & metalloids, PCDD/F and TVOC

Environmental effects

Minor adverse environmental impact on humans, flora, fauna and air from machinery and backfilling

- Regular maintenance of equipment
- Operation during reasonable hours
- Minimisation of dust emissions at source
- Use and maintenance of dust filters

No effect on other sites

Thank you

Yasmin Schembri

yasmin.schembri@ais.com.mt



www.aisenvironment.com