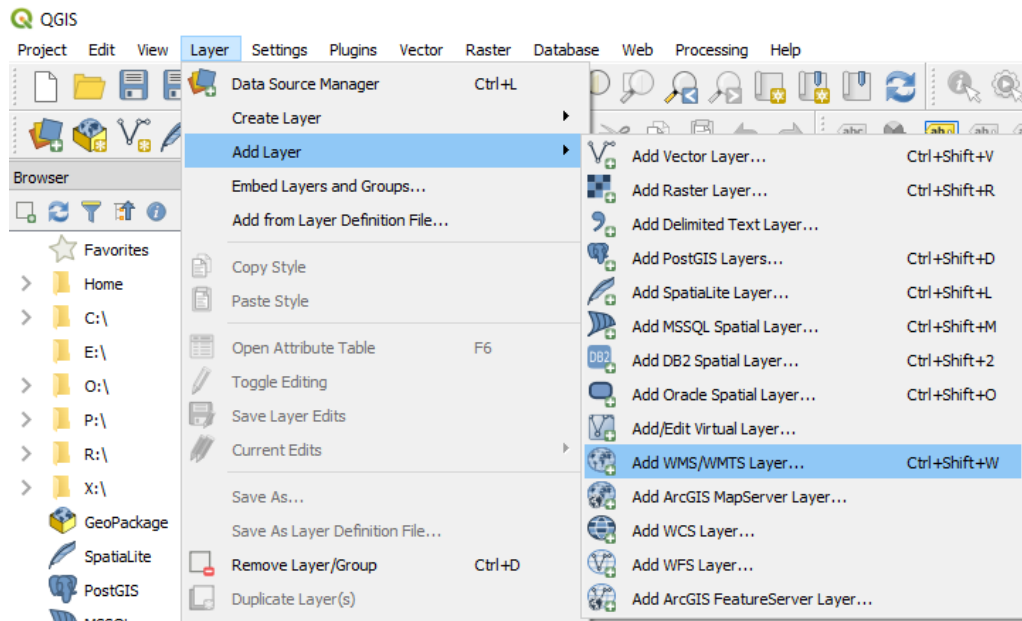
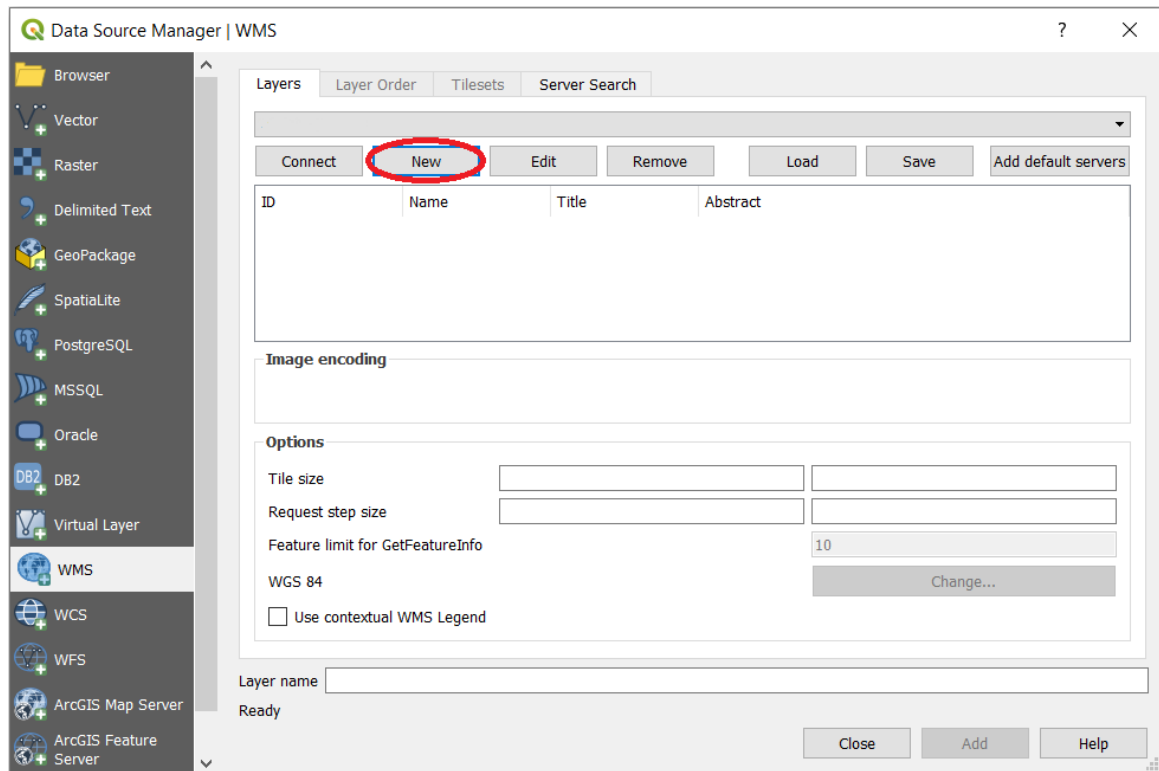


## Connecting to a WMS Service on QGIS

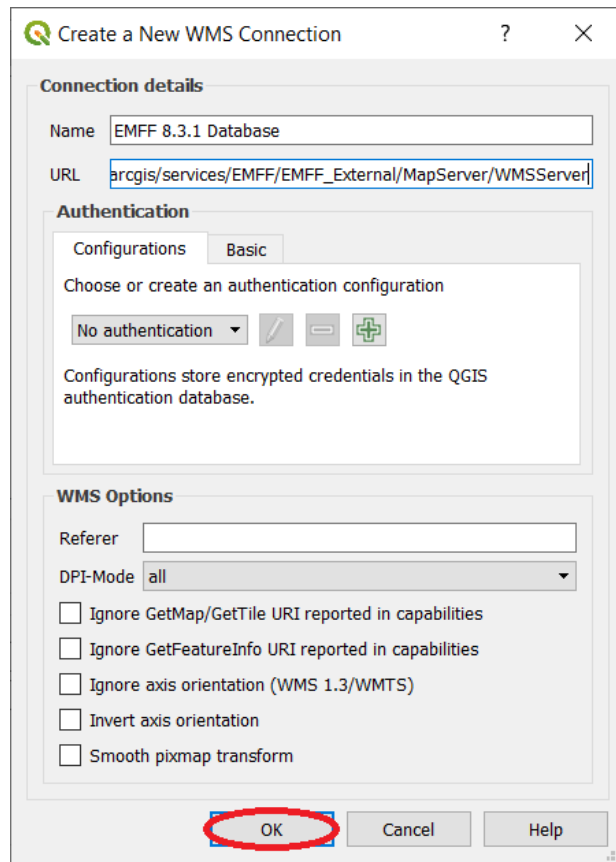
1. After opening QGIS, click on Layer > Add Layer > Add WMS/WMTS Layer. A new dialog box will open.



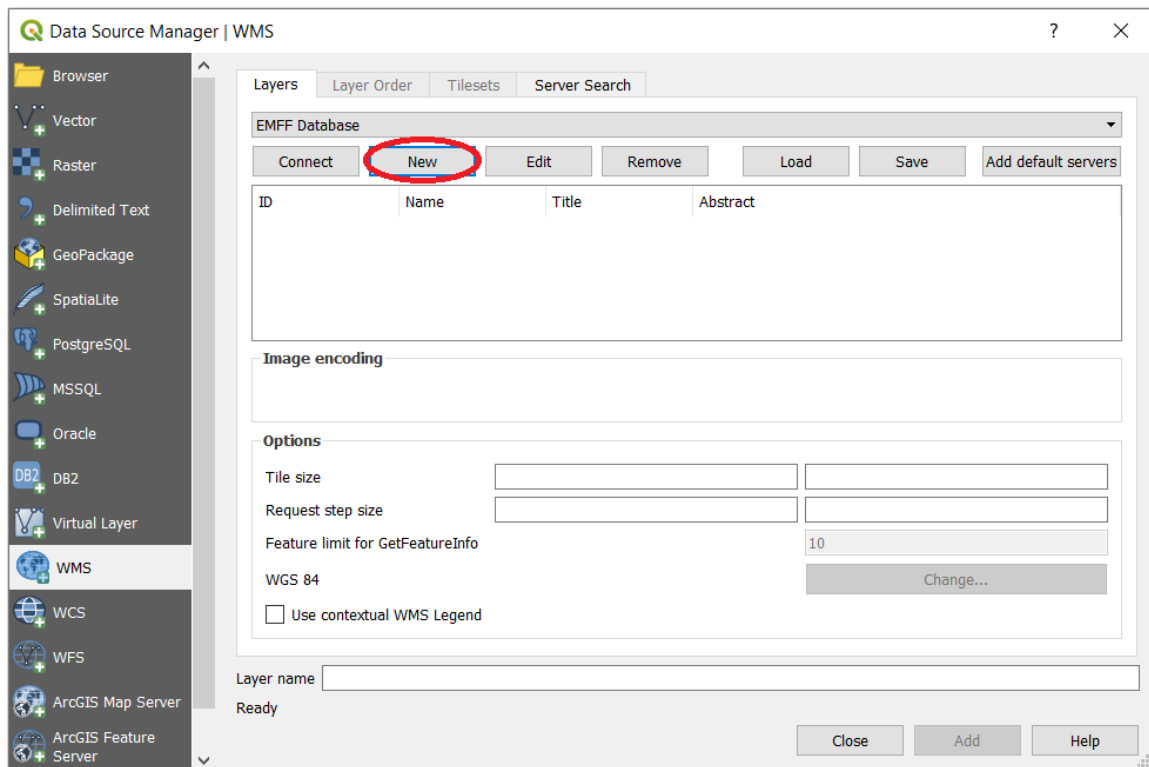
2. From the new dialog box, click on New. Another dialog box will open.



3. Type in *EMFF 8.3.1 Database* in the *Name* field, and paste the following link in the *URL* field:  
*http://217.71.178.6/arcgis/services/EMFF/EMFF\_External/MapServer/WMServer*  
Click OK. The dialog box will close.

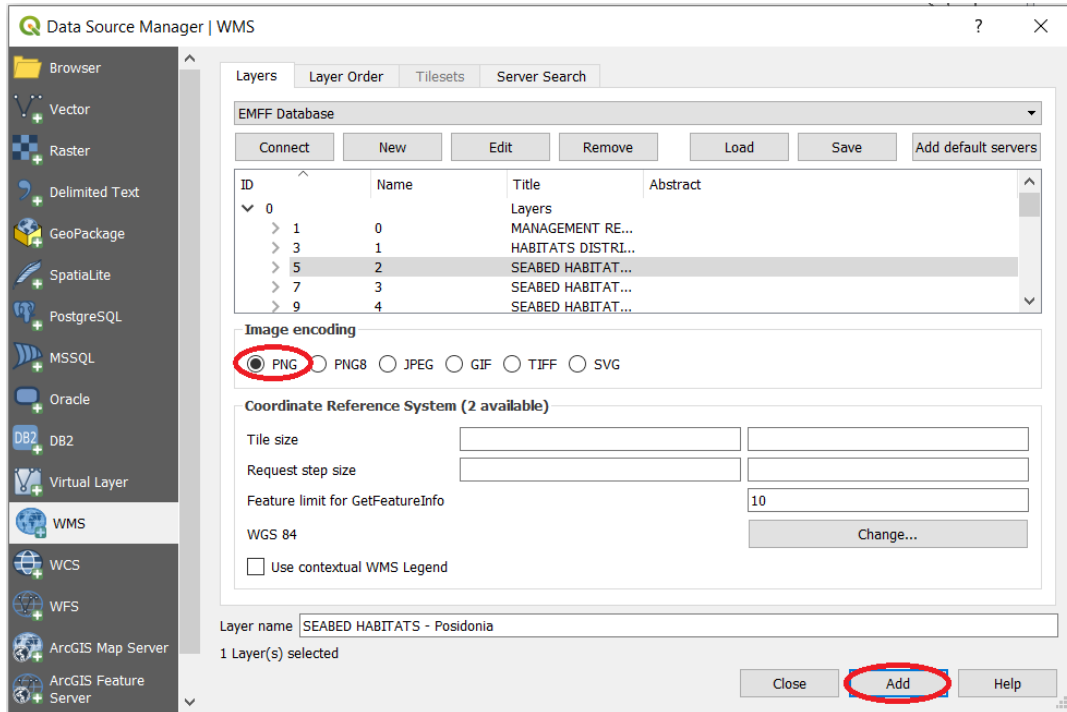


4. On the previous dialog box, click on Connect.



- A list with all available layers will be displayed. Select the layers which you want to display, switch the **Image encoding** to PNG and click on Add.

*Note: It is best to add one layer at a time, as this will allow you to view the symbology for each layer and change the order of how the layers are being displayed.*



- To view the attribute information, select the Identify Features tool from the Attributes Toolbar (View > Toolbars > Attribute Toolbars) and click on the area of interest. A new tab will open on the right side of the screen. Expand all sub-categories (see red circle below), and the selected attribute details for your selected layer will show, as below.

*Note: Should you require to view the attributes of all the layers in your area of interest, switch the Mode to Layer Selection (see blue circle below) and select Identify all.*

