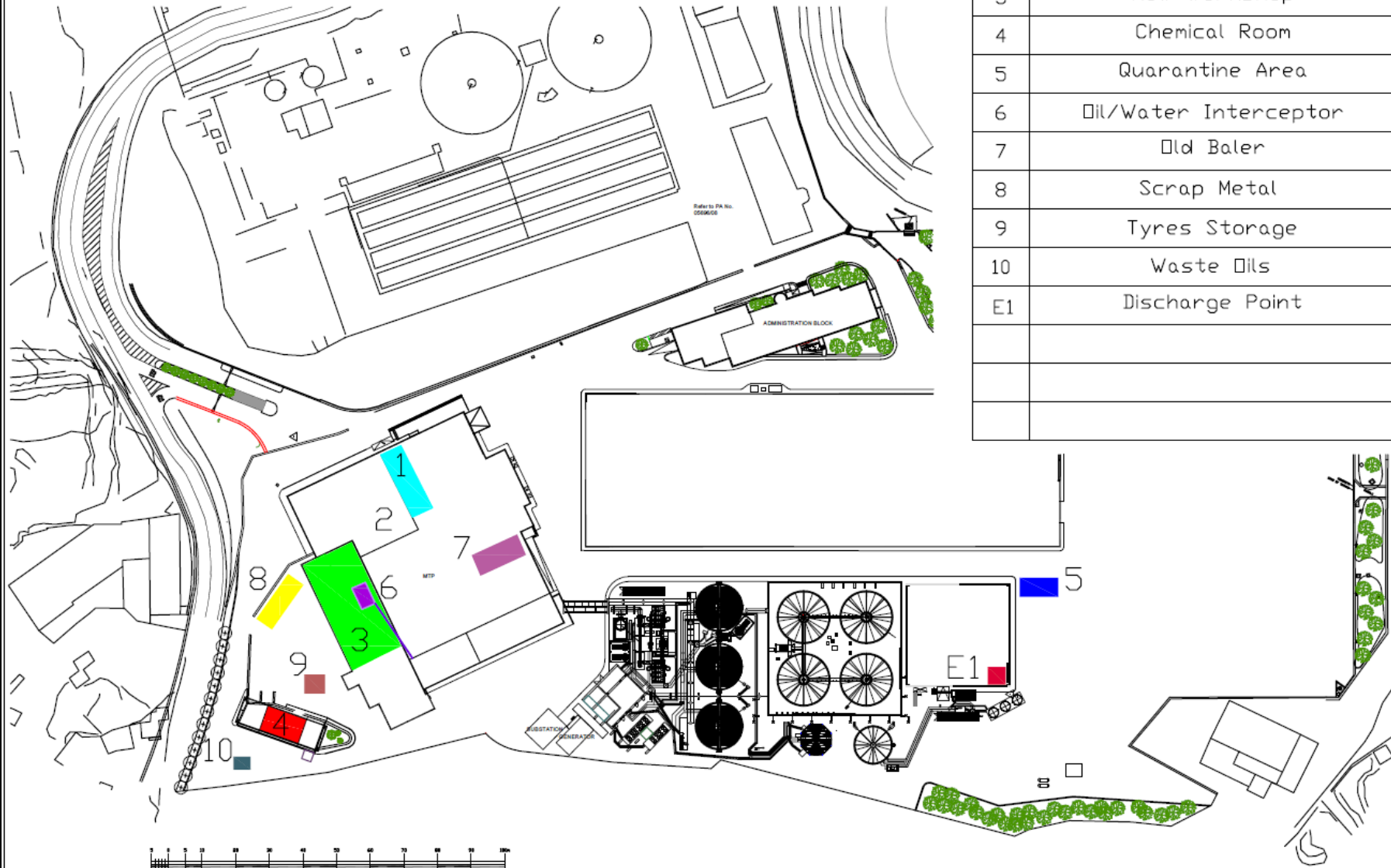


Sant' Antnin Waste Treatment Plant

Application for Variation of IPPC
Permit IP 0005/13/B



Note: Drawing is only to be used to illustrate high-level detail of where equipment / installations are located.

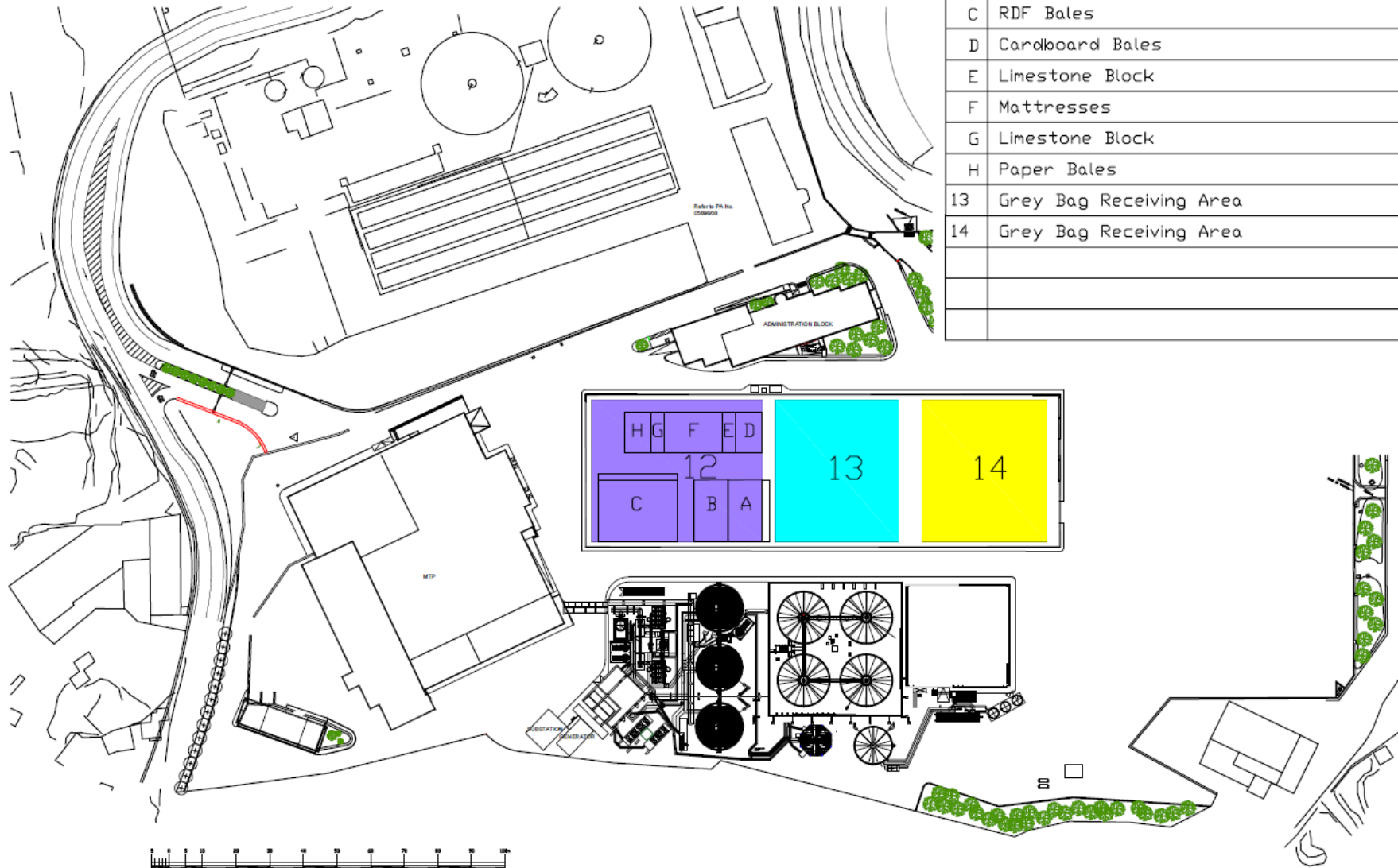


1	Rudimentary Line
2	Reception Area
3	New Workshop
4	Chemical Room
5	Quarantine Area
6	Oil/Water Interceptor
7	Old Baler
8	Scrap Metal
9	Tyres Storage
10	Waste Oils
E1	Discharge Point



Drawing No.:	SAWTP_18042022-A
Revision:	02

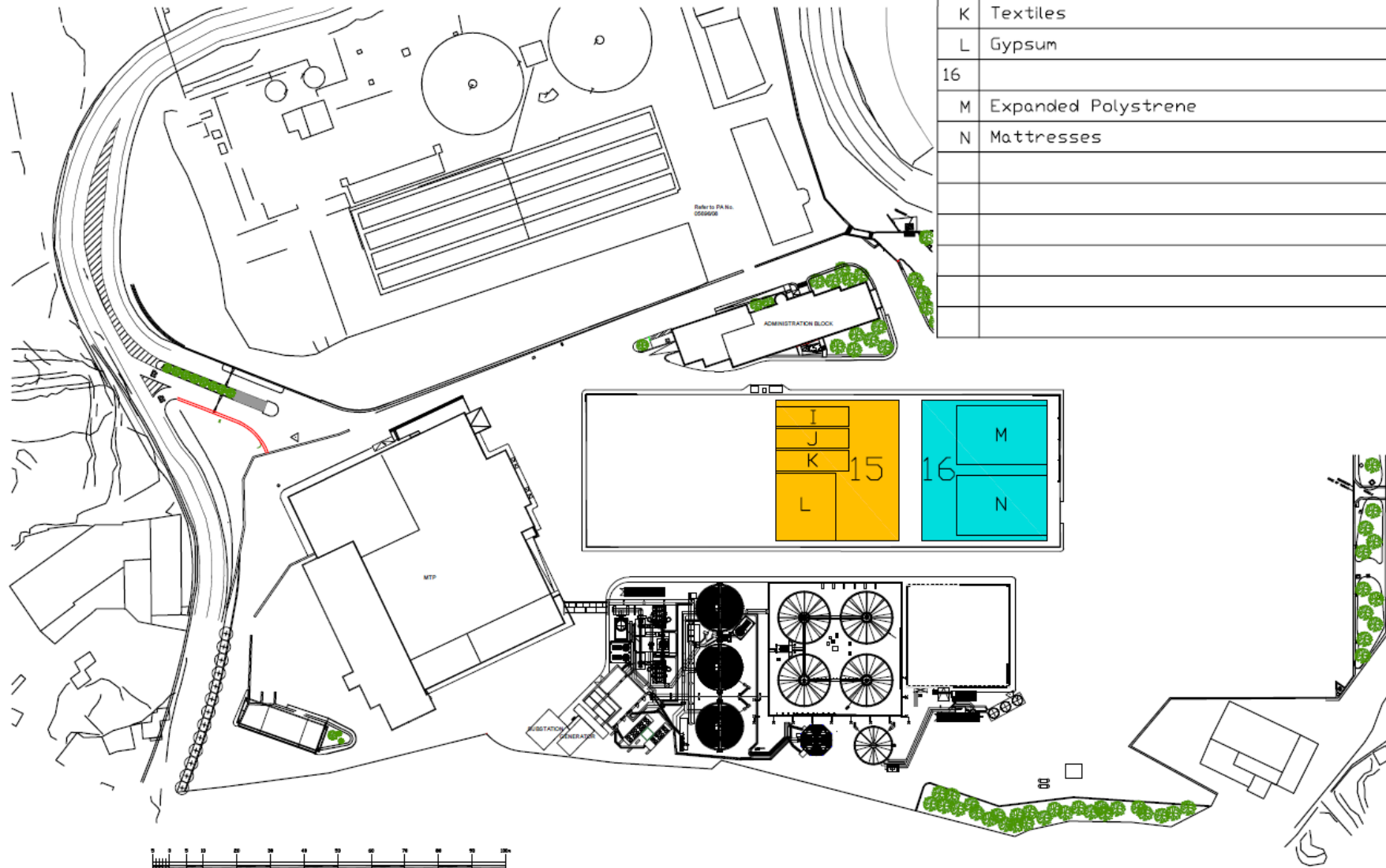
Note: Drawing is only to be used to illustrate high-level detail of where equipment / installations are located.



When Grey Bag is accepted	
12	Sorted and Baled Material
A	HPDE Bales
B	PET Bales
C	RDF Bales
D	Cardboard Bales
E	Limestone Block
F	Mattresses
G	Limestone Block
H	Paper Bales
13	Grey Bag Receiving Area
14	Grey Bag Receiving Area

Drawing No.:	SAWTP_18042022-B
Revision:	01

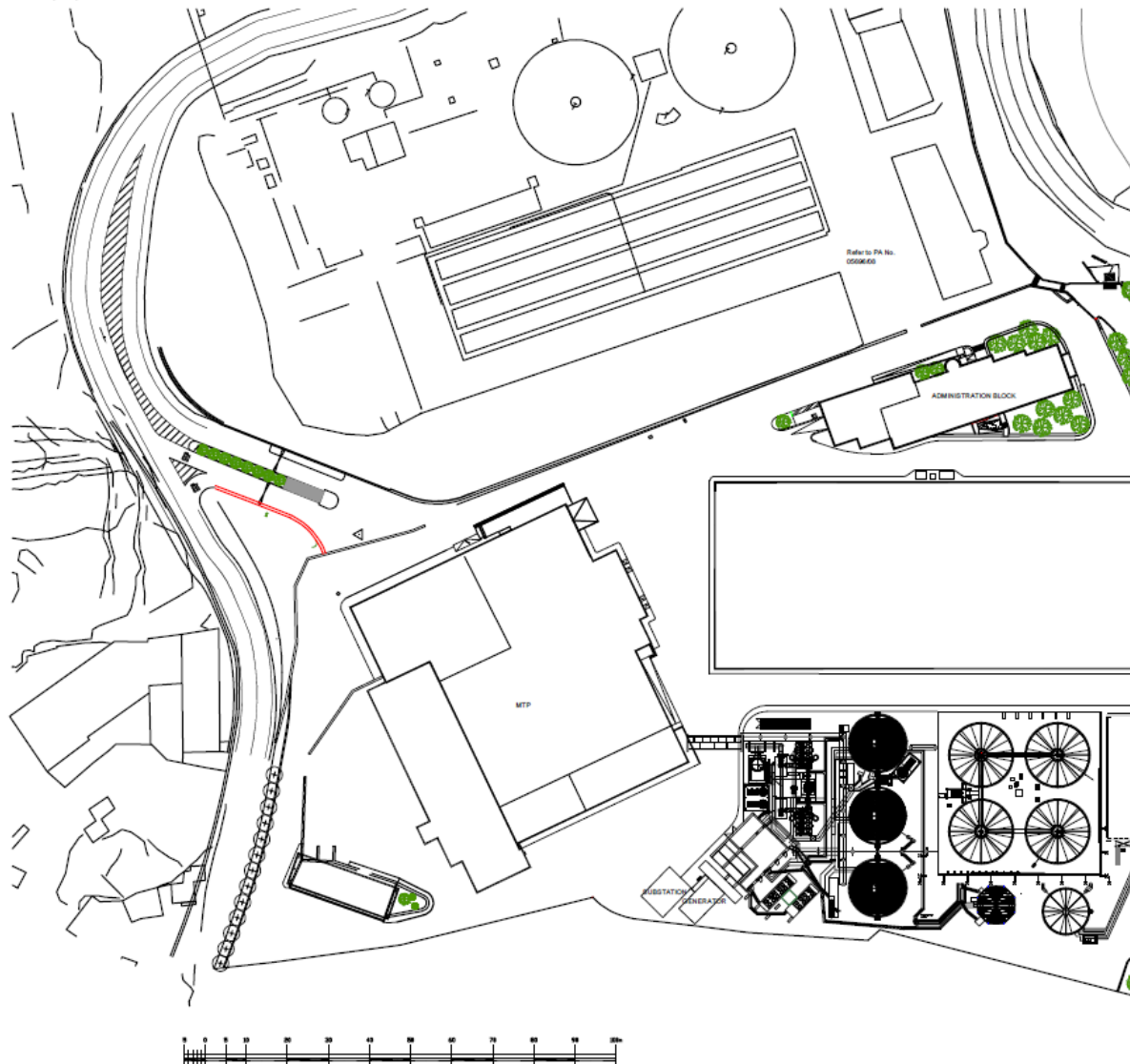
Note: Drawing is only to be used to illustrate high-level detail of where equipment / installations are located.



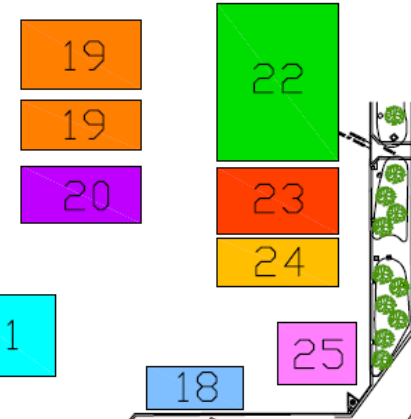
	When Grey Bag is not accepted
15	
I	Wood
J	Flat Glass & Windscreens
K	Textiles
L	Gypsum
16	
M	Expanded Polystyrene
N	Mattresses

Drawing No.:	SAWTP_18042022-C
Revision:	02

Note: Drawing is only to be used to illustrate high-level detail of where equipment / installations are located.



17	Glass Line
18	Ferrous Line
19	Unprocessed Source Segregated Material
20	Sorted Clear Glass
21	Unprocessed Glass Packaging
22	Sorted Mixed/Coloured Glass
23	Sorted Metals
24	MSW (Black Bag)
25	Unsorted Metals



SCALE 1:500

Drawing No.:	SAWTP_18042022-D
Revision:	01

Activities carried out through IP 0005/13/B

The Sant' Antnin Waste Treatment Plant consists of a waste management facility designed for the management of pre-treated and unsorted municipal wastes, through the following operations:

- Material Recovery Facility (MRF) to recover materials for recycling from the collection of sorted wastes from households;
- Mechanical Treatment Plant (MTP) to recover and process organic wastes from Municipal Solid Waste; and
- Anaerobic Digester for (AD) the digestion of organic wastes to produce gas suitable for the generation of electricity for a Combined Heat and Power Plant (CHP).



Scope of the Application

This application seeks the Authority's approval to:

1. Extend operation time of the Rudimentary Sorting Line (RSL);
2. Operate a newly repurposed Ferrous Sorting Line (FSL);
3. Operate a newly built Glass Sorting Line (GSL);
4. Acceptance of new waste streams;
5. Decommission part (Area 1) of the plan.



Rudimentary Sorting Line

- Installation of a magnet at the end of the line aimed at recovering metallic material which would otherwise end up as reject.
- WasteServ wishes the option to operate this line on a 24-hour basis.

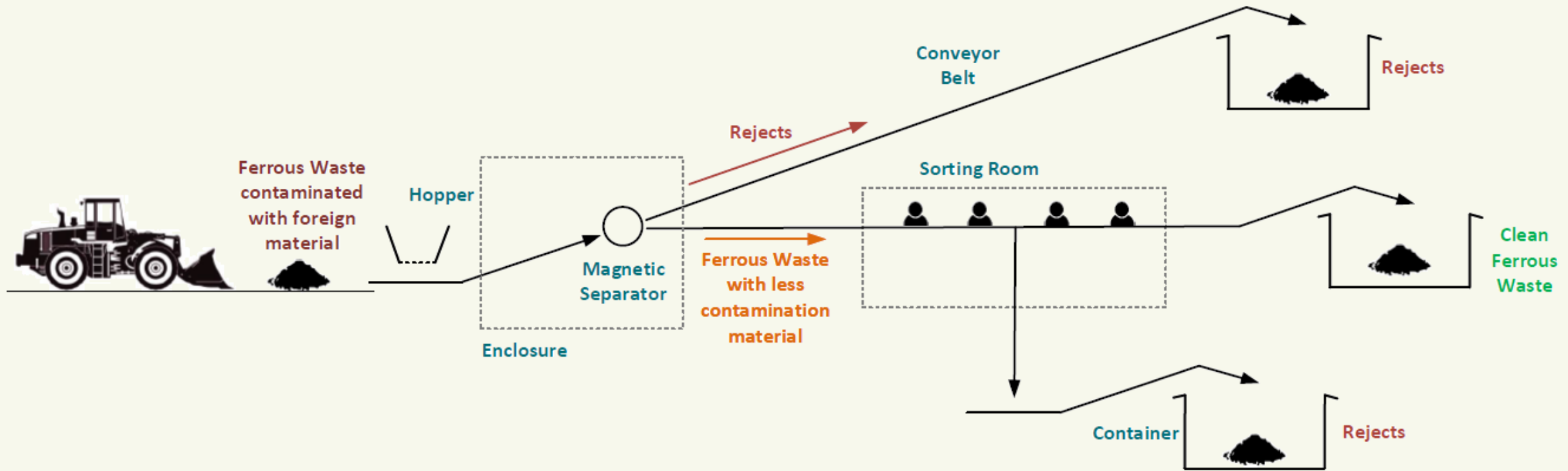


Ferrous Sorting Line

The FSL is aimed at (i) further treating the ferrous output stream from Malta North and (ii) removing rejects of Bring In Sites waste (metal).



Ferrous Sorting Line (cont.)

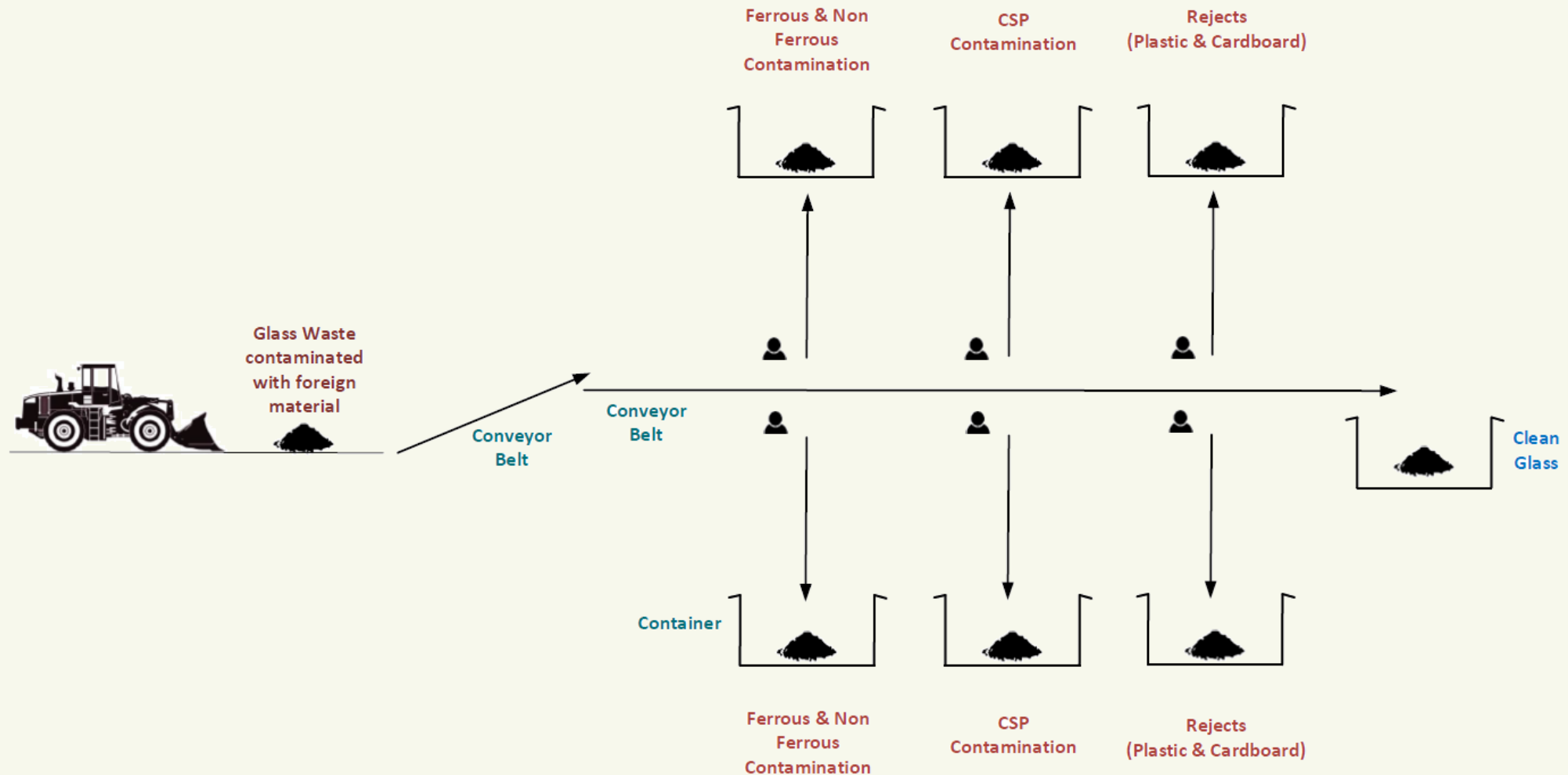


Glass Sorting Line

The GSL is aimed at removing rejects or contamination from households and/or Bring in Sites waste (glass).



Glass Sorting Line (cont.)



Acceptance of New Waste Streams

Following the introduction of the new gate fees, WasteServ seeks to accept and temporary store the following waste streams:

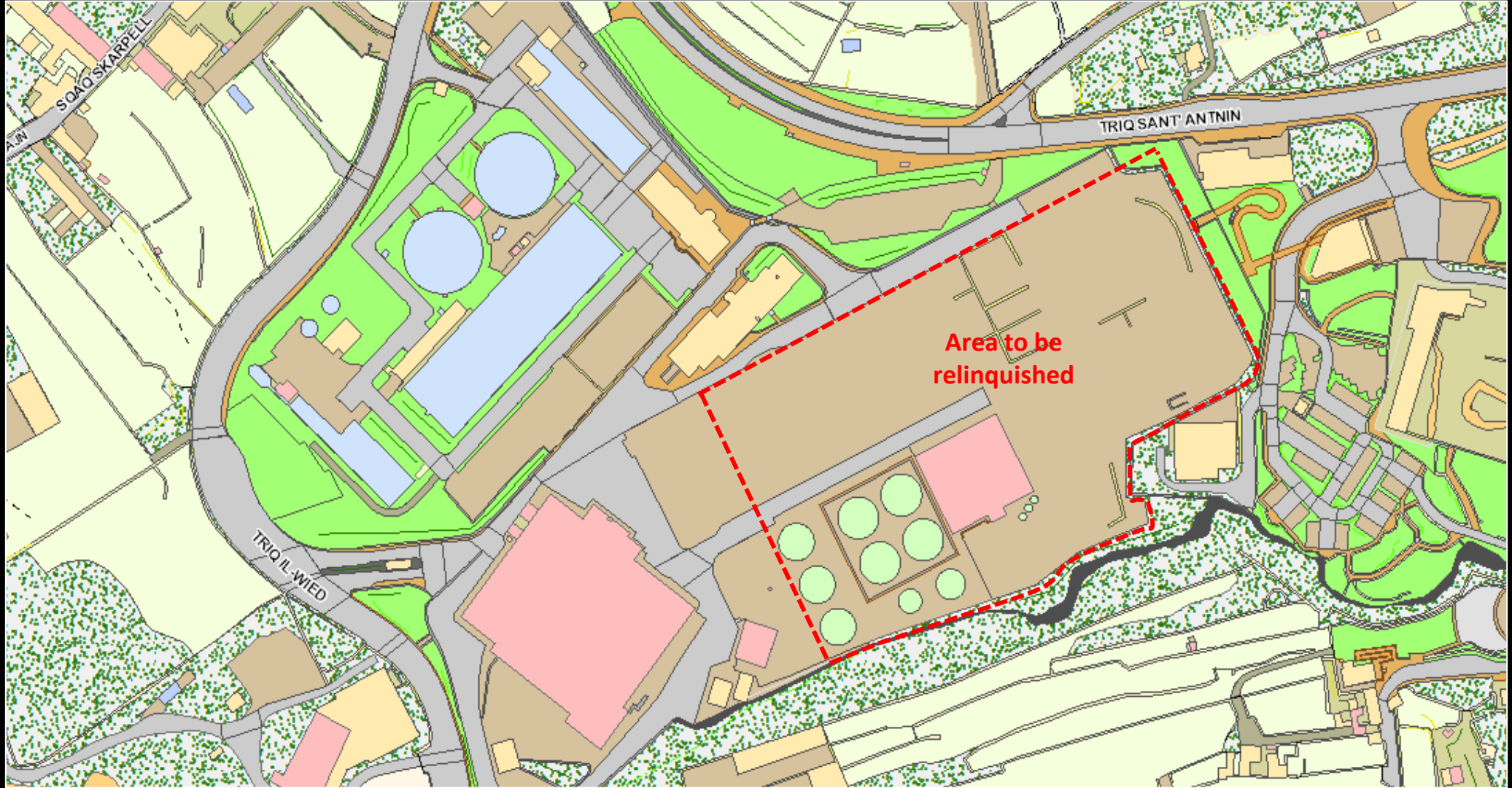
- Wood
- Mattresses
- Polystyrene
- Flat Glass
- Gypsum
- Textiles



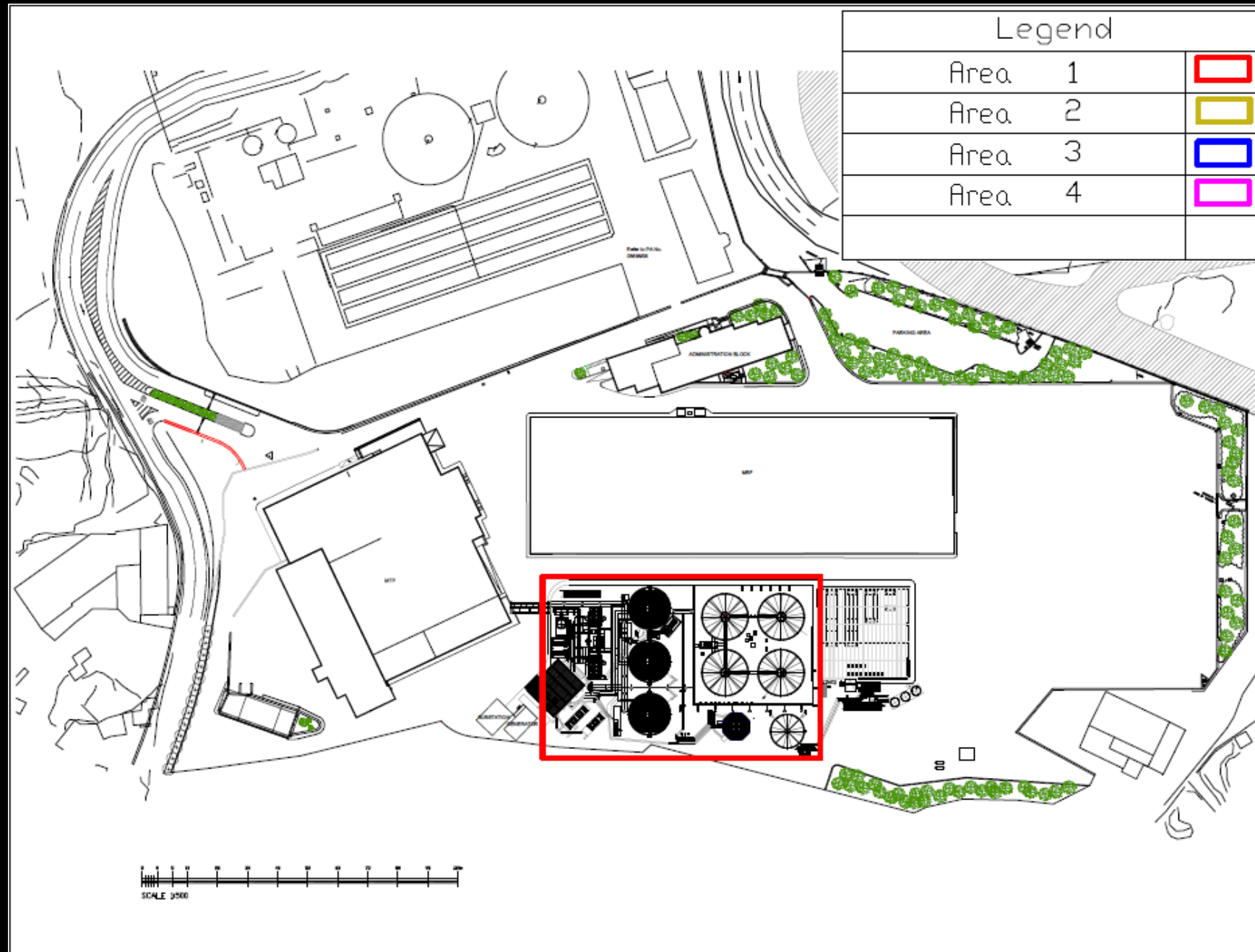
SAWTP Decommissioning

- In response to Pt. 26 of the Improvement Programme, WasteServ submitted to the Authority a Decommissioning Plan for the site. The plan was approved on the 22.05.2023.
- The Decommissioning Plan details the following:
 - The area that shall be relinquished;
 - Equipment that shall be decommissioned;
 - The different areas of the decommissioning; and
 - Timeline.





Area 1



Documentation Submitted as part of the Application

- Introduction & Non-Technical Summary
- IPPC Application Forms
- Improvement Programme Update
- Updated Site Plans
- Line Diagrams, Process Flow Diagrams & Emissions Inventory
- Preventive Maintenance Schedules
- Emergency Response Plan
- Environmental Monitoring Programme
- Odour Management Plan
- BAT Comparison



Documentation Submitted as part of the Application (cont.)

- Environmental Management System
- Noise Monitoring Results
- Partial Decommissioning Documentation (Area 1)
- Updated list of EWC Codes
- CVs of Technical Competent Persons



Mitigation Measures

Rudimentary Sorting Line:

- Dust mitigated via filtration.
- Given the nature of the waste (grey bag), no odour nuisance is envisaged.
- As regards noise, operations shall be enclosed indoors in the shed with the building fabric and doors / shutters limiting noise propagation.
Also, with proper planning, vehicle movement in the yard at night shall be limited to the bare minimum.



Mitigation Measures (cont.)

Ferrous Sorting Line:

- Waste sprinkled with water to eliminate the dust.
- No odour nuisance is envisaged.
- An enclosure was erected around the (first) inclined conveyor belt (immediately after the hopper) and the magnetic separator to limit sound propagation.
Drop heights shall be kept to a minimum.
Operations shall stop at 7pm.



Mitigation Measures (cont.)

Glass Sorting Line:

- Given the nature of the waste, no odour nuisance is envisaged.
- As regards noise, drop heights shall be kept to a minimum.
Operations shall stop at 7pm.



Conclusion

- The scope of this variation is to extend / introduce operations at Sant' Antnin aimed at increasing the quantity and quality of recovered material.
The ultimate objective is to re-introduce the recovered material back in the economy.
- In parallel, this application paves the way for plant decommissioning
- The application process considered the equipment, associated processes, odour and noise nuisances, and made a comparison to Best Available Techniques.
- The application has been reviewed by ERA and the Statutory Consultees, and replies have been provided with respect to queries raised.



Thank you!

Contact us

 ECOHIVE Complex,
Tul il-Kosta,
Naxxar NXR9030

 80072200

 wsm.com.mt

