

# R4 Agglomeration Aircraft L<sub>den</sub>



Environment & Resources Authority  
Hexagon House, Spencer Hill, Marsa, MRS 1441, Malta  
T | +356 2292 3500 W | era.org.mt

## Malta R4 strategic noise mapping results for assessment year 2021

### Legend

#### Noise contour bands (dB)

55 - 59

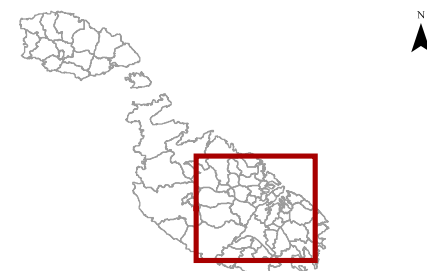
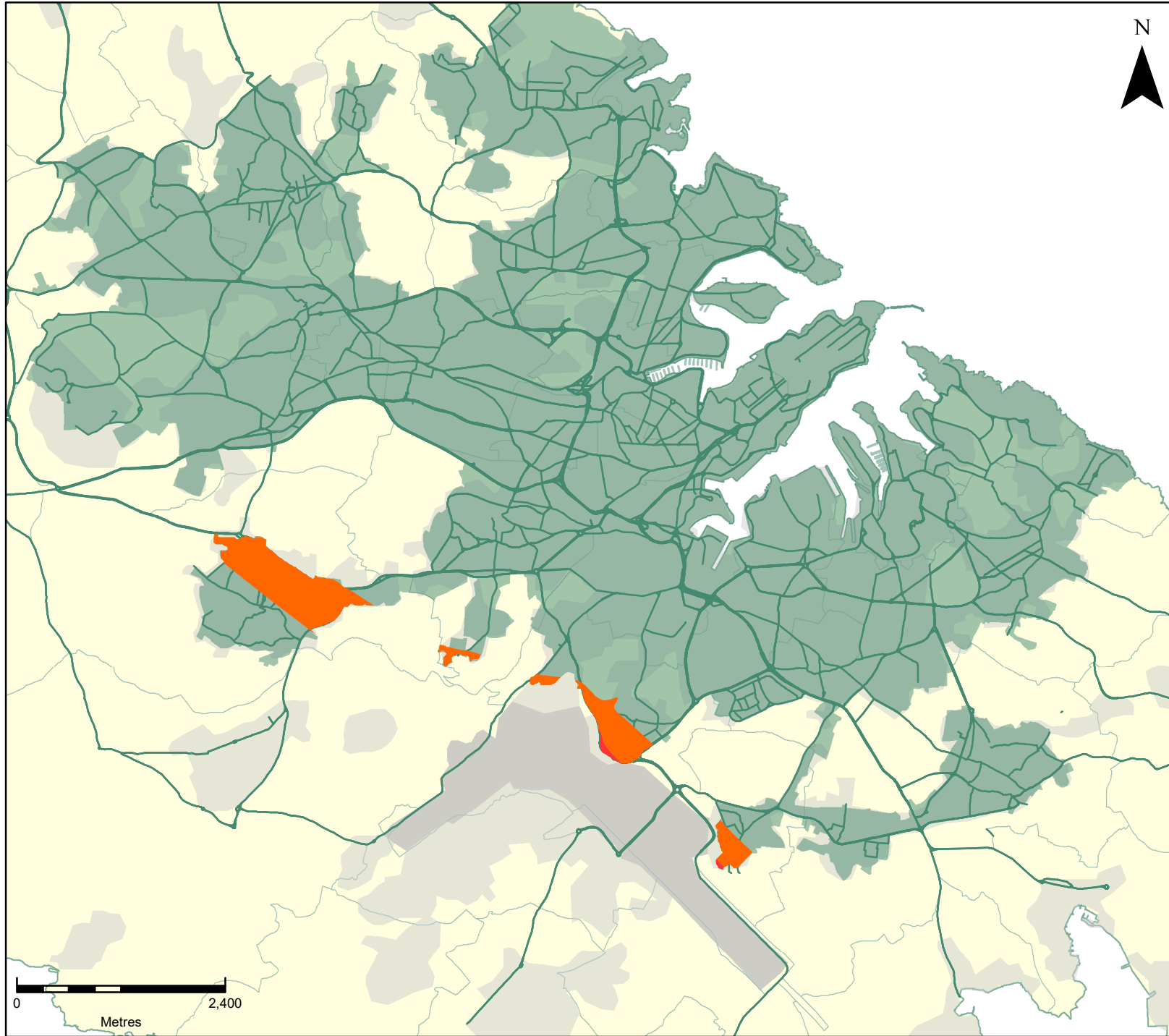
60 - 64

Arterial, Distributor & Local Access Roads

Malta Noise Agglomeration

Malta International Airport

Local Council Boundaries



Bounding Co-ordinates of Map (UTM / Metres):

Min E 446,689; N 3,976,988  
Max E 460,275; N 3,965,100

Date: 22 July, 2024

Published by the Environment & Resources Authority ©

SintegraM Basemap, 2018, Developing Spatial Data Integration for the Maltese Islands, Planning Authority