

# R4 Major Roads L<sub>night</sub>



Environment & Resources Authority  
Hexagon House, Spencer Hill, Marsa, MRS 1441, Malta  
T | +356 2292 3500 W | era.org.mt

## Malta R4 strategic noise mapping results for assessment year 2021

### Legend

#### Noise contour bands (dB)

- 50 - 54
- 55 - 59
- 60 - 64
- 65 - 69
- >70

- Arterial, Distributor & Local Access Roads
- Malta Noise Agglomeration
- Local Council Boundaries
- Malta Coastline

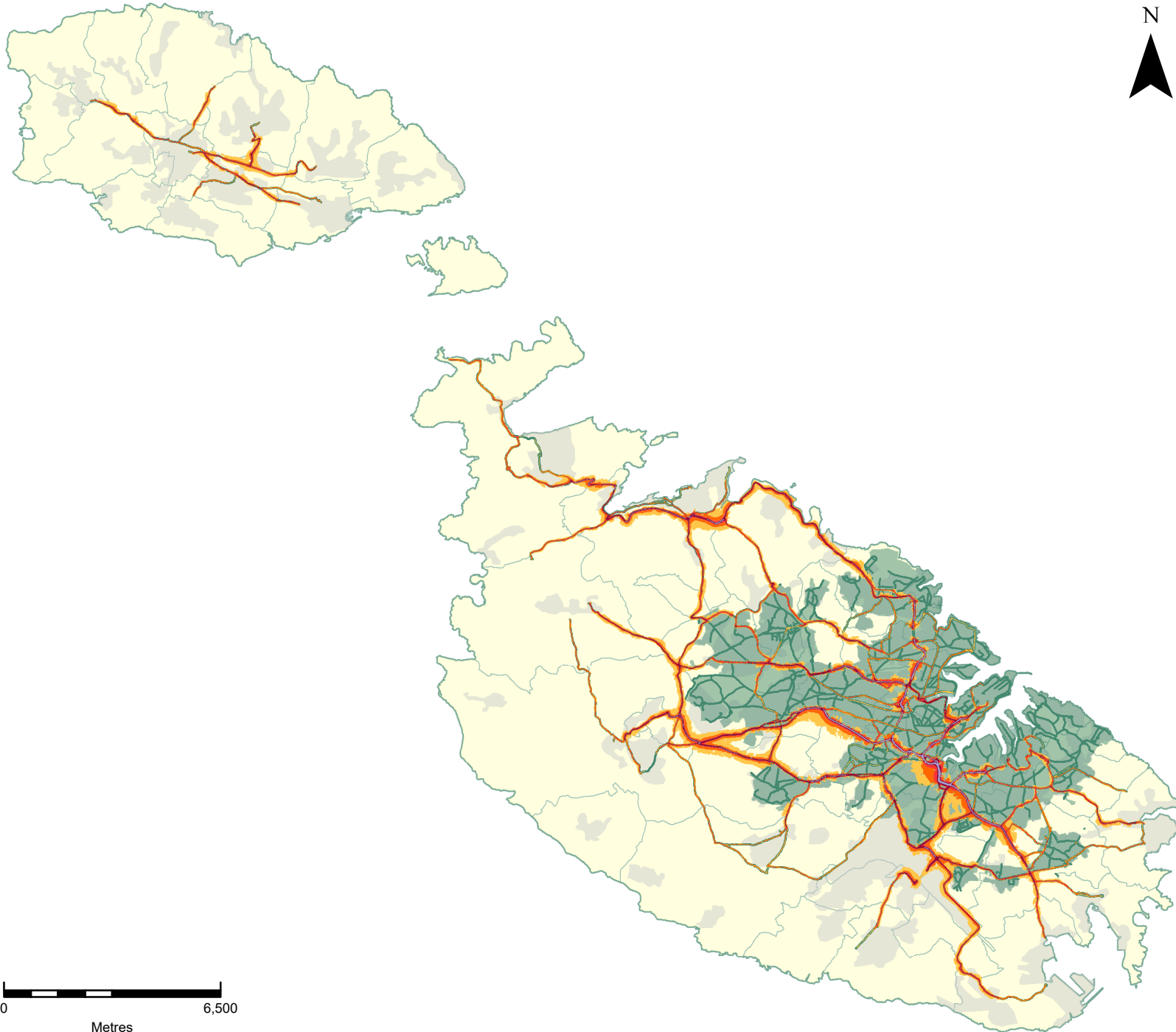
Bounding Co-ordinates of Map (UTM / Metres):

Min E 426,137; N 3,993,981  
Max E 462,188; N 3,962,438

Date: 22 July, 2024

Published by the Environment & Resources Authority ©

SIntegraM Basemap, 2018. Developing Spatial Data Integration for the Maltese Islands, Planning Authority



0 6,500  
Metres